

NEAR-TERM

OVERVIEW

Advisory Group

September 2017



MATERIALS OVERVIEW

- Recommendations for the 4th, 5th, and 6th Avenues Corridor
- Framing our Near-Term Action Plan
- Performance Expectations from Near-Term Actions
- Near-Term Implementation



NEAR-TERM ACTION PLAN: PROJECTS AND PROGRAMS

Projects and Programs presented at the June 2017 Advisory Group meeting will be included in the *Near-Term Action Plan*. These projects were identified through technical work and application of Advisory Group Guiding Principles.

Continued work to define solutions that meet joint goals for the 4th, 5th, and 6th Avenues corridor has been a priority for the OCC Agency Partners over the last 8 weeks.



Traffic Operations



Transit Speed, Reliability, & Customer Experience



Bus Service Restructures



Hub Area Improvements



Pedestrian Experience and Accessibility



Center City Bike Network Connections



Management Strategies

See the June 2017 Advisory Group Meeting materials for a more comprehensive list of projects.

OBJECTIVES FOR 4th, 5th, and 6th AVENUES CORRIDOR

- Improve safety for all users
- Keep transit moving at speeds close to or better than existing
- Deliver a safe, all ages and ability protected bicycle lane east of 3rd Ave from Vine to Main Streets
- Provide a safe transit operating environment that accounts for passing needs (if skip stop operation is maintained)
- Improve the pedestrian experience and the public realm

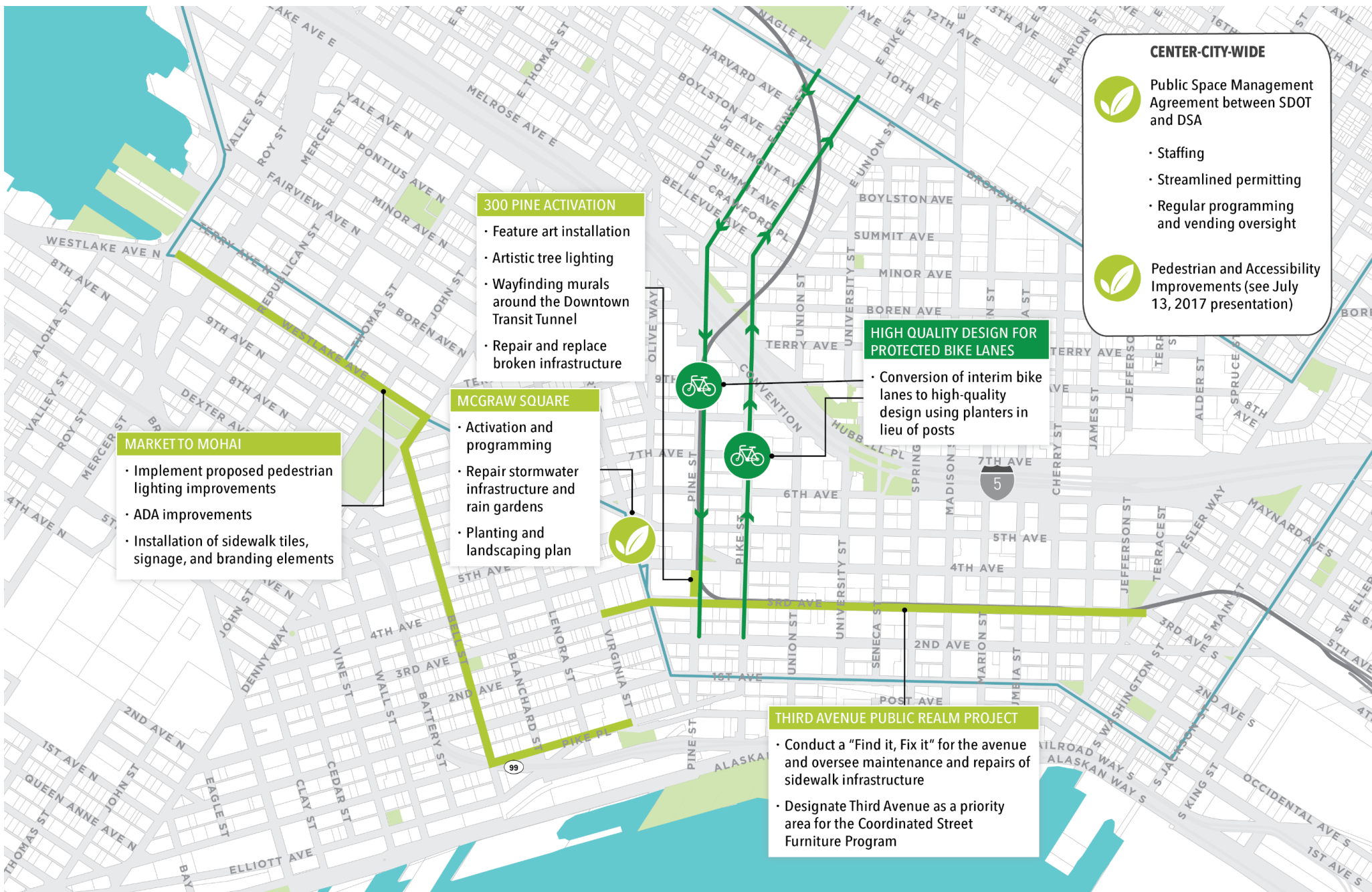




Elements of Recommended Option for 4th, 5th, and 6th Avenues



Elements of Recommended Option for 4th, 5th, and 6th Avenues



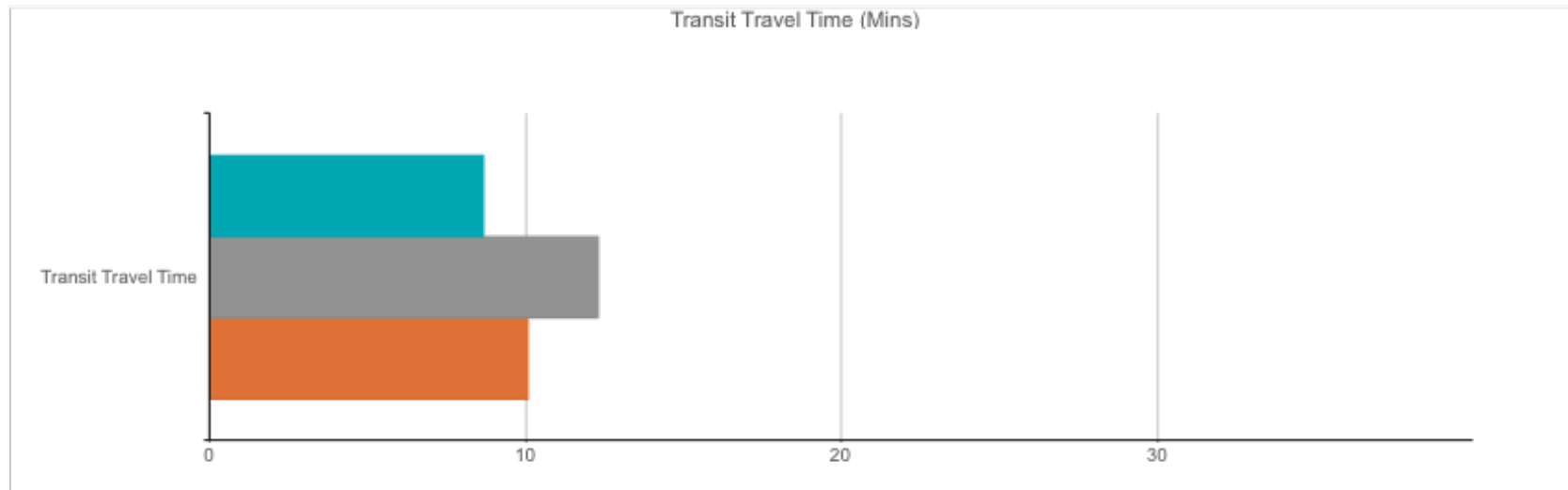
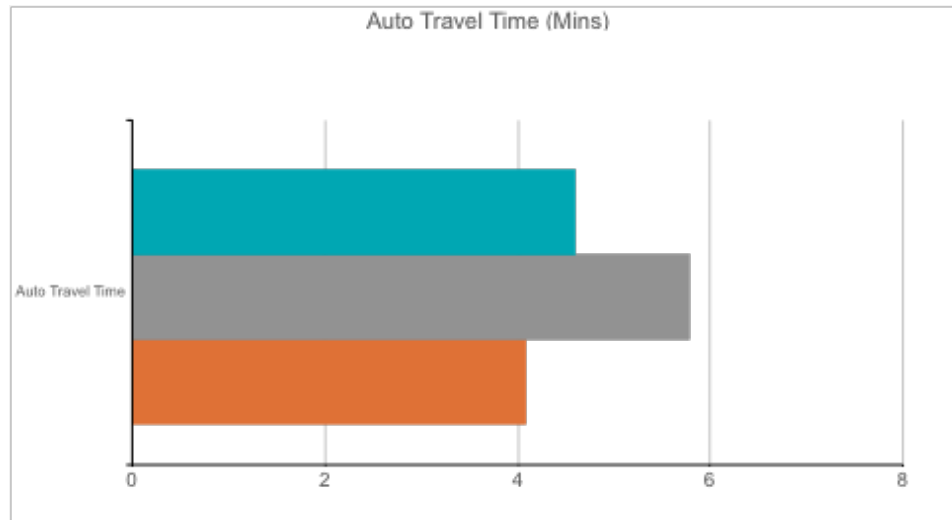
Priority Public Realm Projects and Programs

PERFORMANCE OF RECOMMENDED PACKAGE FOR 4TH, 5TH, AND 6TH AVENUES

- Improves safety outcomes for all users
- Improves northbound transit travel time by 15% to 20% vs. today; up to 40% vs 2019 No Action
- Delivers key CCBN connection (4th Ave 2-Way PBL from Main to Vine)
- Reduces bus traffic on 4th Ave by about 30% and eliminates stops on 4th Ave
- Reduces public realm and pedestrian impacts in retail core
- Improves N-S person capacity & throughput during peak period

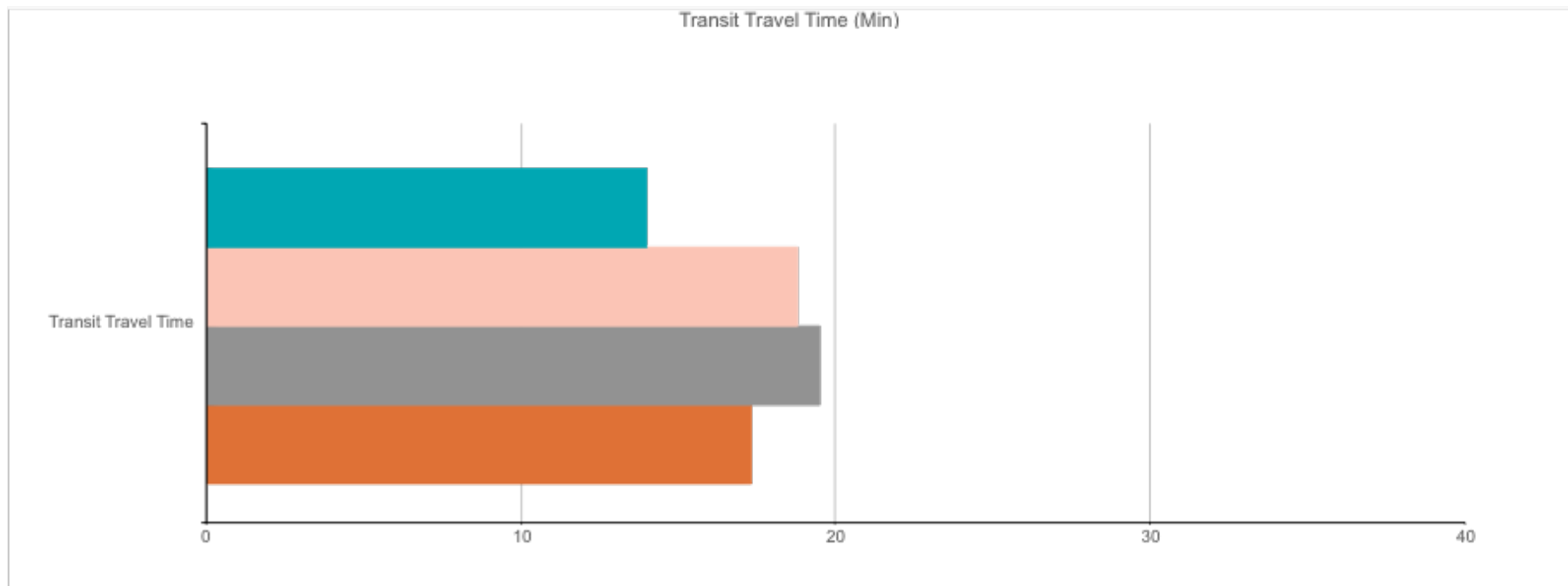


4TH AVENUE TRAVEL TIME



5TH & 6TH AVENUE PATHWAY VS. 4TH AVENUE PATHWAY TRANSIT TRAVEL TIME

- The 5th Ave and 6th Ave Pathway provides a transit travel time benefit over 4th Ave pathway options, even compared to existing:



NEAR-TERM ACTION PLAN

- Integrated plan for keeping Center City Moving, Connected, and enjoyable to Experience
- Outcome-driven, action plan
- 5 Key “Moves” that deliver on Advisory Group Guiding Principles
- Implementation and monitoring strategies



NEAR-TERM ACTION PLAN: OUR MOVES

1

Improve Safety and Security

Improve safety and security for all users of Center City streets, particularly those who are most vulnerable.



Guiding Principles



Safety: Provide a safe and comfortable pedestrian and cycling environment.



User experience: Create an easy to use and intuitive system by prioritizing accessibility, pedestrian mobility, wayfinding, and multimodal connectivity.

2

Enhance Public and Pedestrian Spaces

Provide an inviting, functional, and accessible public realm that welcomes people of all ages and abilities.



Guiding Principles



Safety: Provide a safe and comfortable pedestrian and cycling environment.



User experience: Create an easy to use and intuitive system by prioritizing accessibility, pedestrian mobility, wayfinding, and multimodal connectivity.



Optimization: Optimize use of limited street and sidewalk space for people and goods.



Transportation: Provide safe, affordable, comfortable, reliable and convenient transportation options for all users of all abilities – daytime and nighttime, commuters and non-commuters, and those needing timely multiple connections.



Well-being: Support social sustainability and economic prosperity for all.

NEAR-TERM ACTION PLAN: OUR MOVES

3

Keep People Moving on Downtown Streets

Keep people and goods moving, using the most space-efficient means for mobility.



Guiding Principles



User experience: Create an easy to use and intuitive system by prioritizing accessibility, pedestrian mobility, wayfinding, and multimodal connectivity.



Equity: Design for the health, safety and well-being of all who live in our community using established race and social justice guidelines.



Flexibility: Create flexible systems that can evolve over time by taking a system-wide view and challenging long-held assumptions.

4

Use Limited Street Space Wisely

Use space wisely to move people and goods and to ensure efficient and reliable access for goods delivery.



Guiding Principles



Optimization: Optimize use of limited street and sidewalk space for people and goods.



Stewardship: Reduce vehicles and emissions and use sustainable building practices.



Well-being: Support social sustainability and economic prosperity for all.



Flexibility: Create flexible systems that can evolve over time by taking a system-wide view and challenging long-held assumptions.

5

Provide Efficient Travel Options

Provide a variety of affordable, sustainable, and convenient alternative travel modes to driving alone.



Guiding Principles



Optimization: Optimize use of limited street and sidewalk space for people and goods.



Transportation: Provide safe, affordable, comfortable, reliable and convenient transportation options for all users of all abilities – daytime and nighttime, commuters and non-commuters, and those needing timely multiple connections.



Stewardship: Reduce vehicles and emissions and use sustainable building practices.



Flexibility: Create flexible systems that can evolve over time by taking a system-wide view and challenging long-held assumptions.

NEAR-TERM ACTION PLAN PERFORMANCE EXPECTATIONS

SAFETY



7% DECREASE IN TOTAL COLLISIONS
FOR ALL STREET USERS

Near-Term Actions
Improve Safety
Outcomes for All Street
Users



18% DECREASE IN ALL
BICYCLE COLLISIONS

Safety Improvements
Implemented at All of the
Highest Risk Collision
Locations



10% DECREASE IN REPORTED
PEDESTRIAN COLLISIONS



REDUCED BUS PASSING REQUIREMENTS ON 4TH AVE
IMPROVES TRANSIT OPERATIONS SAFETY

NEAR-TERM ACTION PLAN PERFORMANCE EXPECTATIONS

PERSON TRAVEL TIME

Near-Term Actions keep people moving to and through downtown at speeds better than the No-Action Scenario

Aggregate User Travel Time-PM Peak

-30 SEC.

Compared to
No Action

NORTH
BOUND



SOUTH
BOUND

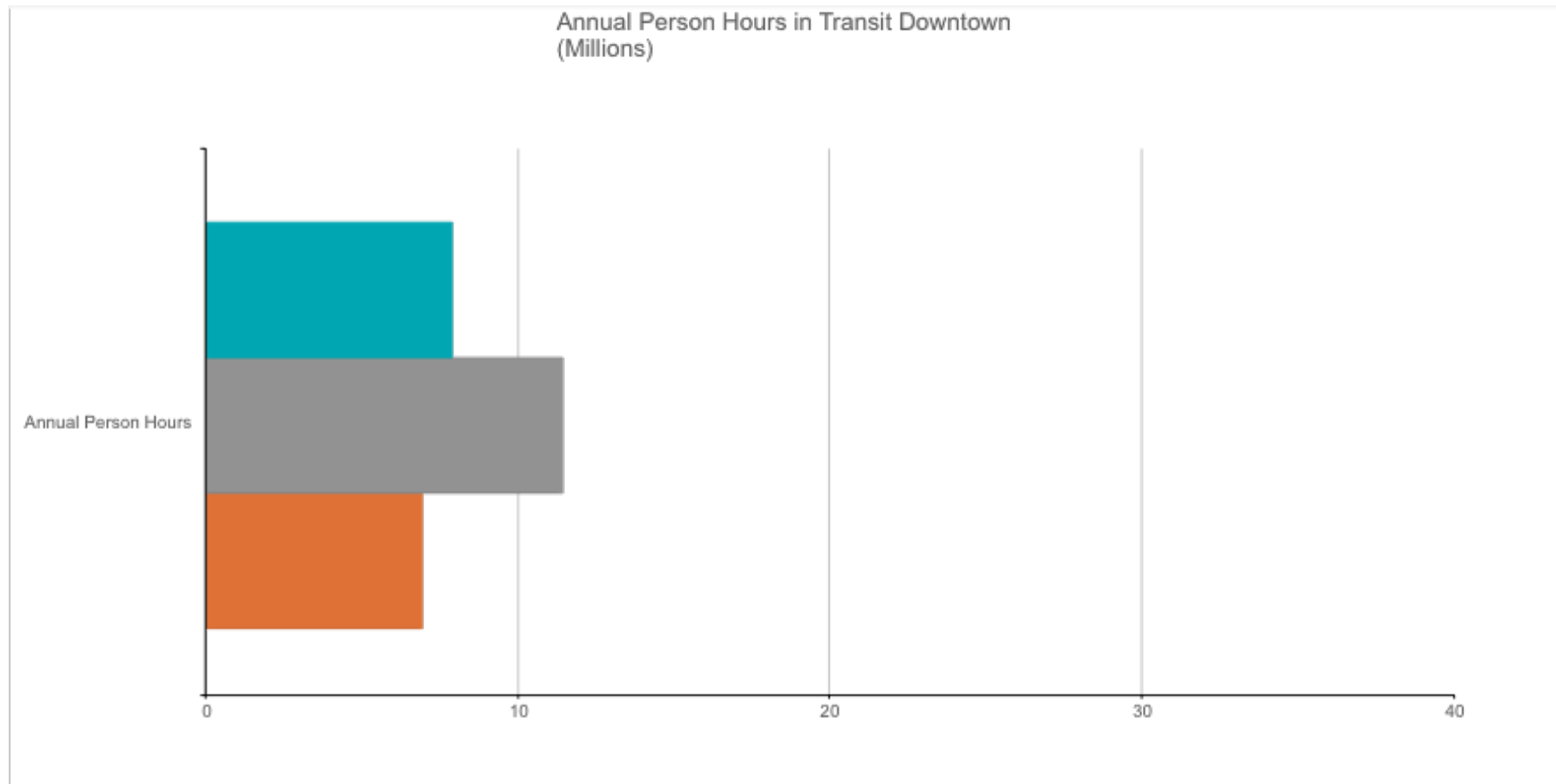
-1 MIN.

Compared to
No Action

NEAR-TERM ACTION PLAN PERFORMANCE EXPECTATIONS

ANNUAL PERSON HOURS IN TRANSIT DOWNTOWN (MILLIONS)

Near-Term OCC actions will save bus passengers 2.5 million hours each year stuck in transit congestion on downtown streets



NEAR-TERM ACTION PLAN PERFORMANCE EXPECTATIONS

CENTER CITY PROJECTED BICYCLE RIDERSHIP GROWTH

A completed Center City Bike Network
can more than double bicycle trips taken in
the Center City

Center City Bike Ridership

TODAY:

42,500

Current daily bike trips
in the Center City

+ growth &
better facilities



85,000

+

25,000

=

110,000

Bike share trips
generated (based
on estimated
system growth
and trips per bike)

Total trips on
CCBN

IN 2023



* Based on current bike counts, historic ridership gains from new facilities (before and after studies), benefit of destination connectivity, and free floating bike share usage. Assumes free floating bike share program remains in place.

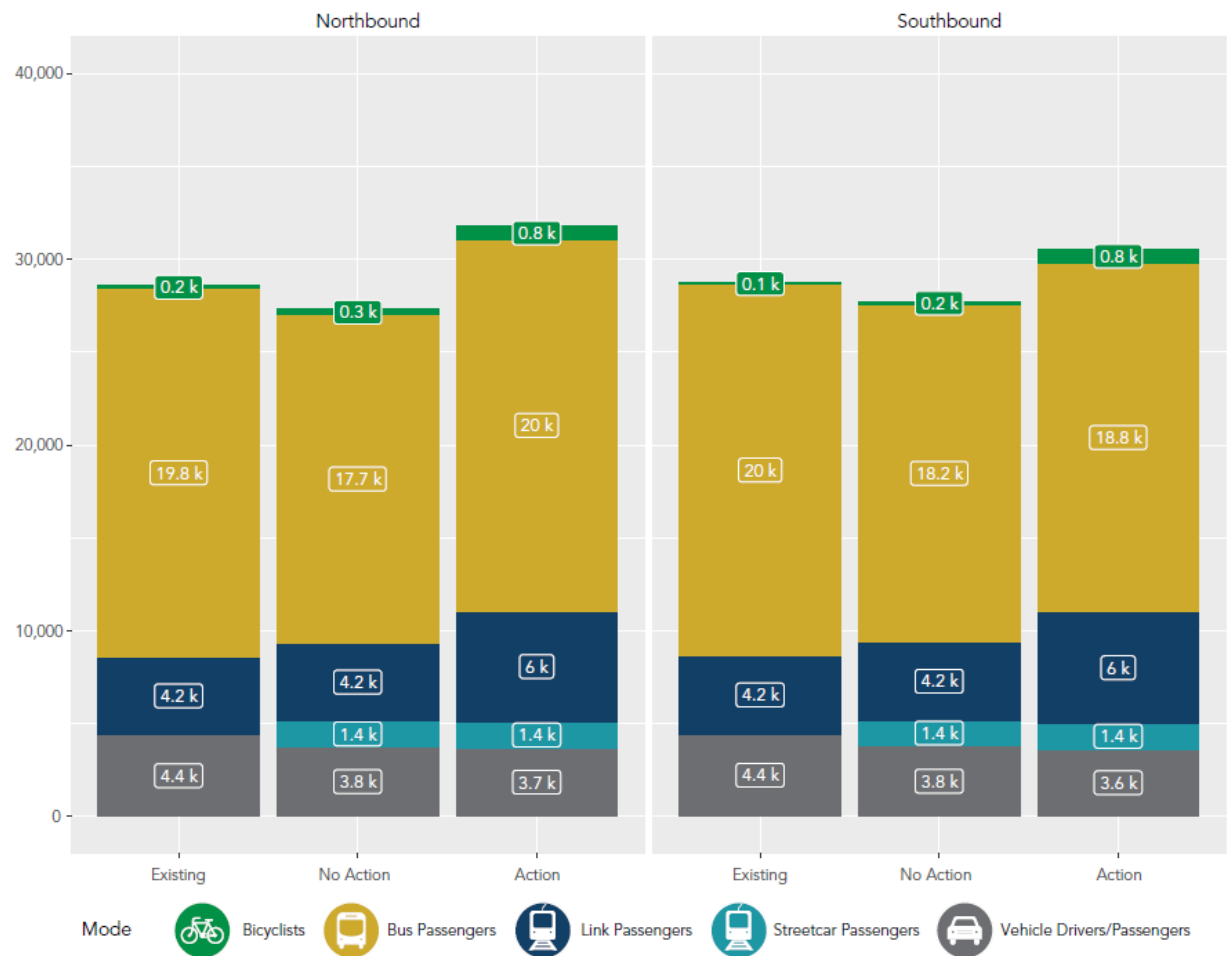
NEAR-TERM ACTION PLAN PERFORMANCE EXPECTATIONS

PERSON THROUGHPUT

Near-Term Actions allow about 4,000 more bus passengers per hour to move through the heart of Downtown during PM Peak Hour

Overall person throughput increases by up to 10,000 people per hour

New NB transit pathways improves system resiliency



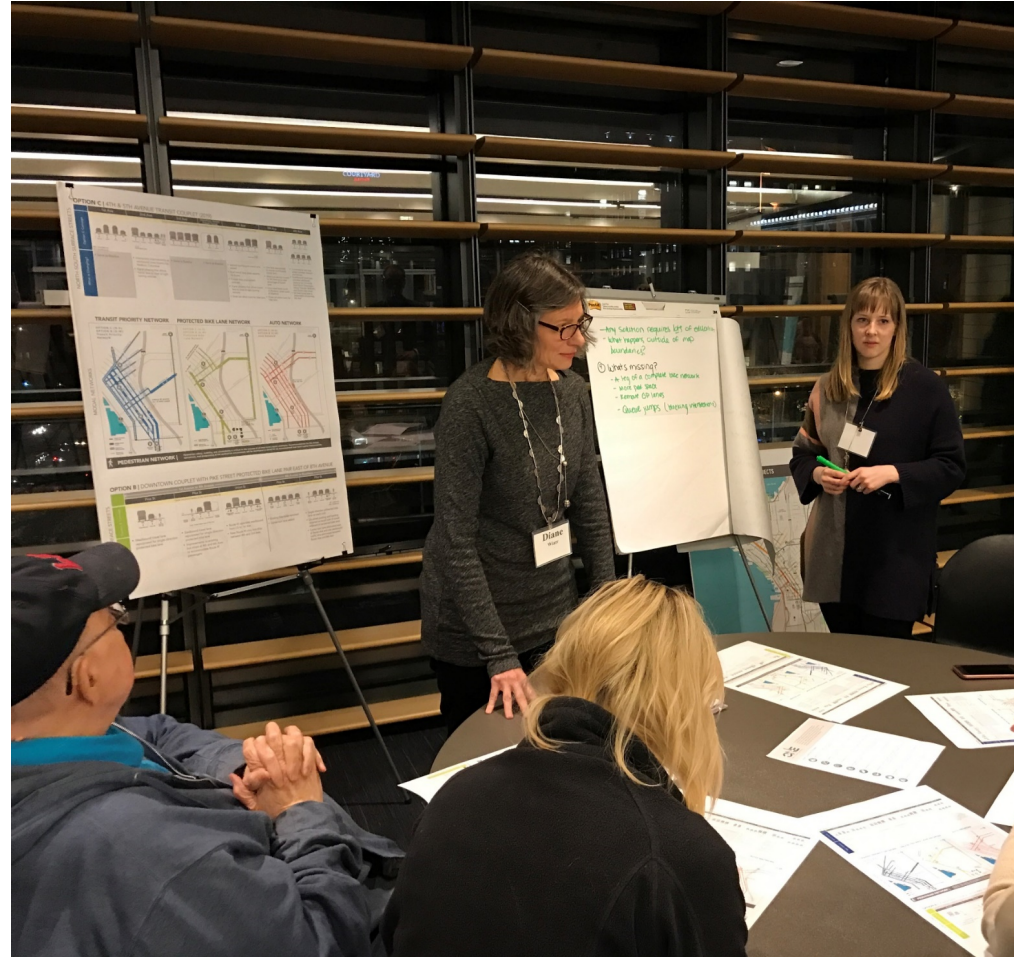
CRITICAL ACTIONS FOR IMPLEMENTATION PHASES

- Address transit accessibility, particularly where grades are a factor
- Advance wayfinding and public information
- Consider phasing of key interrelated Near-Term actions and projects (i.e., transit and bike improvements)
- Develop monitoring program and track key metrics



WHAT'S UPCOMING FOR THE ADVISORY GROUP

- Receive *Near-Term Action Plan*
- Receive Near-Term Action Plan summary document to aid discussion with your contacts
- Agencies moving forward implementation processes
- Advisory Group focus will turn to long-term plan



THANK YOU

