

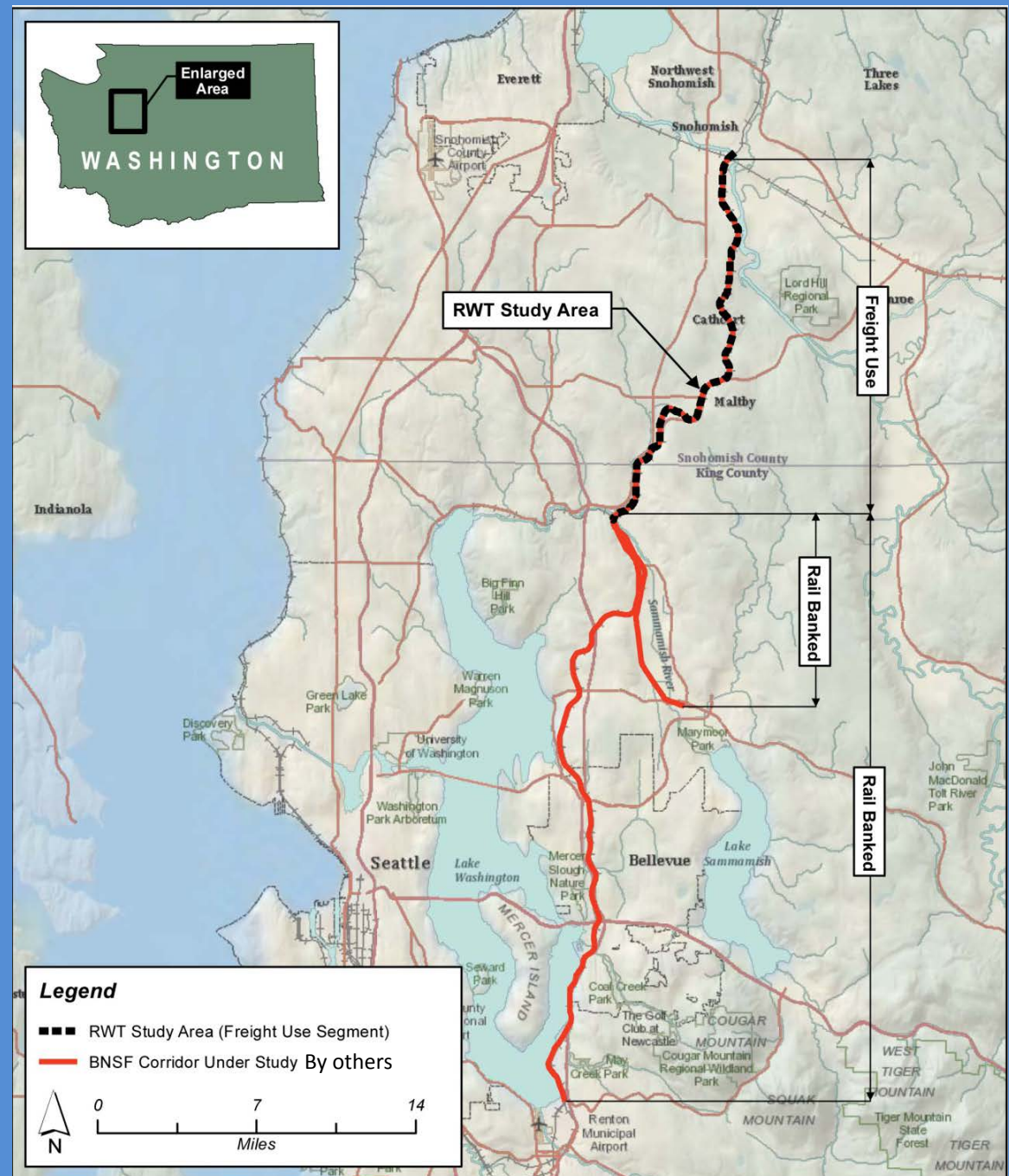
# Snohomish County Eastside Rail Corridor

June 2013



# Eastside Rail Corridor Vicinity Map

- 14 mile long corridor
- Active Freight use
- Connects two major trail systems



# Snohomish County Eastside Rail Corridor

- Snohomish County fully supports:
  1. Passenger Rail use
  2. Freight Rail use
  3. Trail use
- Active freight line serves businesses in South Snohomish county
- In discussion with Port of Seattle to acquire trail easement



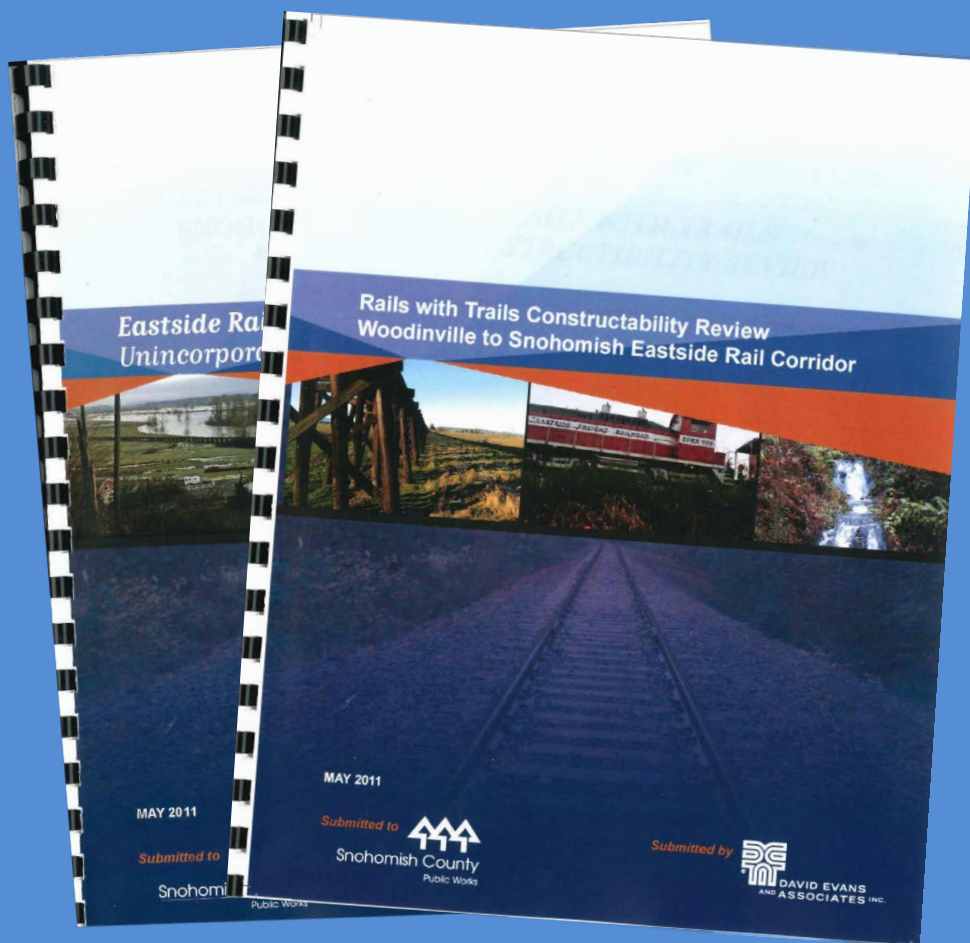


# Snohomish County Eastside Rail Corridor Freight/Excursion Rail Improvements

1. Track currently excepted status = 10mph operating speed
2. Excursion or Passenger rail would require rail upgrade to class 1 or 2
3. Current cost estimates
  - a) \$6 m. -- rail class II upgrade (25 /30 mph operating speed)
  - b) \$15-\$22 m – trail design & construction



# Snohomish County Eastside Rail Corridor



**2011 Study to examine potential uses of the Eastside rail corridor**

- Freight
- Commuter Rail
- Excursion Rail
- Trail
- Utilities

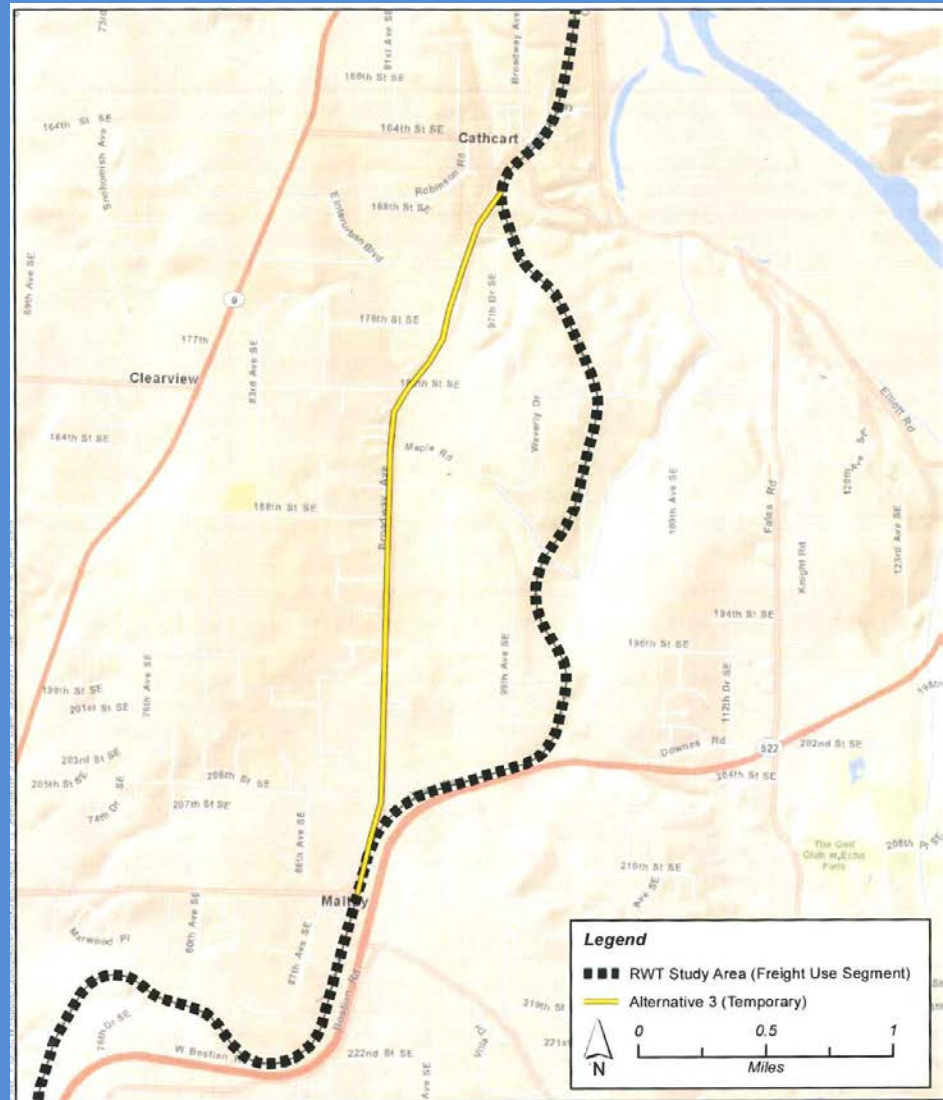
- Divided into 6 segments
- Evaluation of alternative trail alignments
- Segment #1 & #2 are relatively easy to construct.





# Snohomish County Eastside Rail Corridor *Segment #3 – Maltby to Cathcart*

- Difficult and expensive to construct with 7 wall structures
- Broadway project to add shoulders for peds & cyclists.



ESRI, ArcGIS Online, 2009-2011

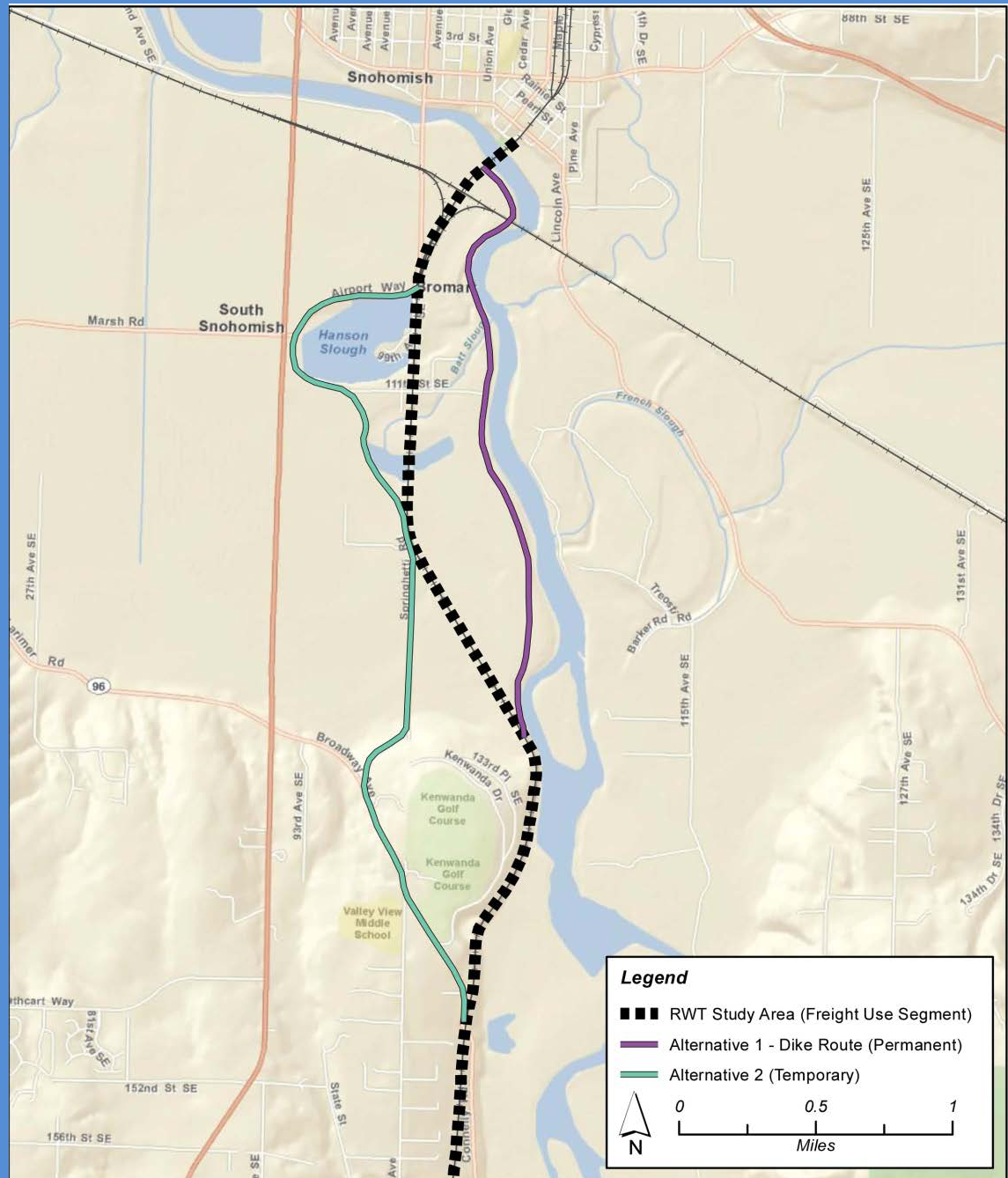
**Figure 12**  
Eastside Rail Corridor  
Alternative 3  
Snohomish County, WA



# Snohomish County Eastside Rail Corridor

## Segment 5 & 6

- Challenging design problems
- Bridge Structures
- Steep slopes into Snohomish river
- Exploring Alternative alignments

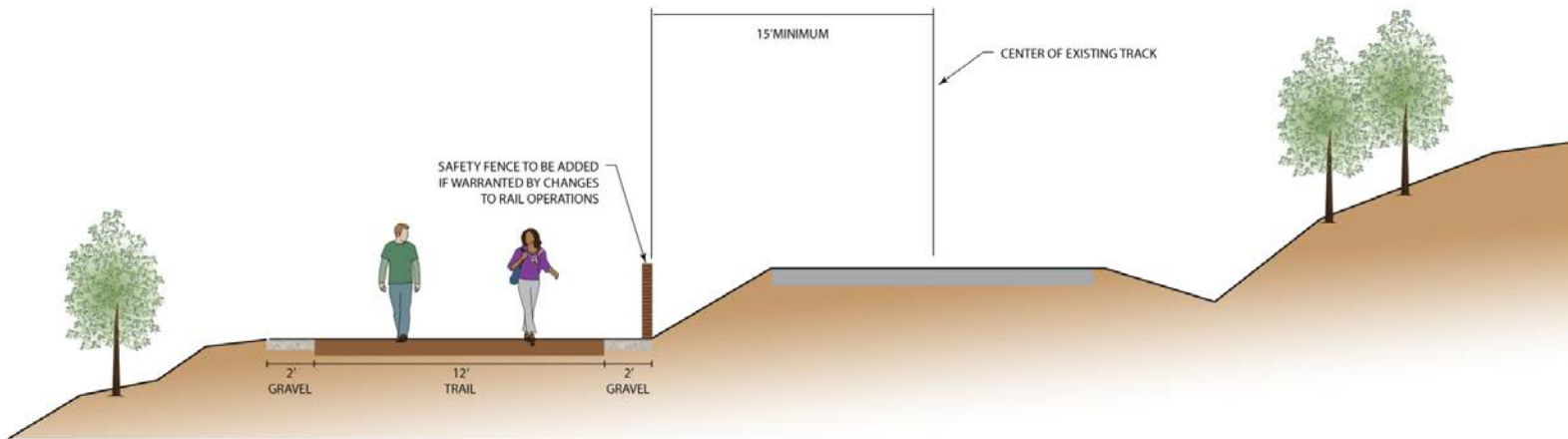




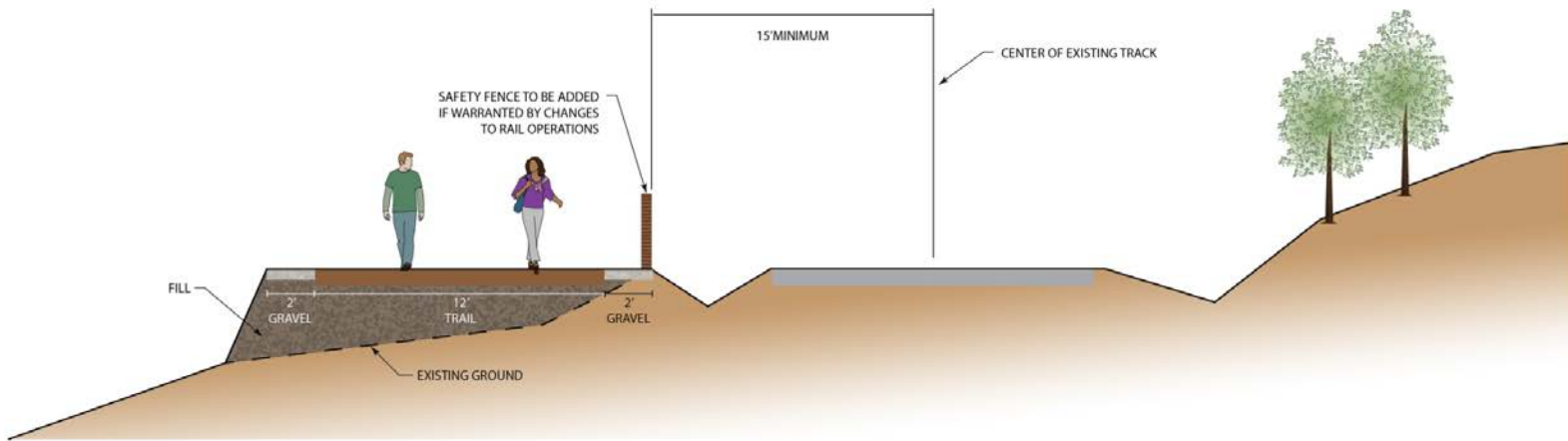
# Eastside Rail Corridor

## Sections

### Section 1



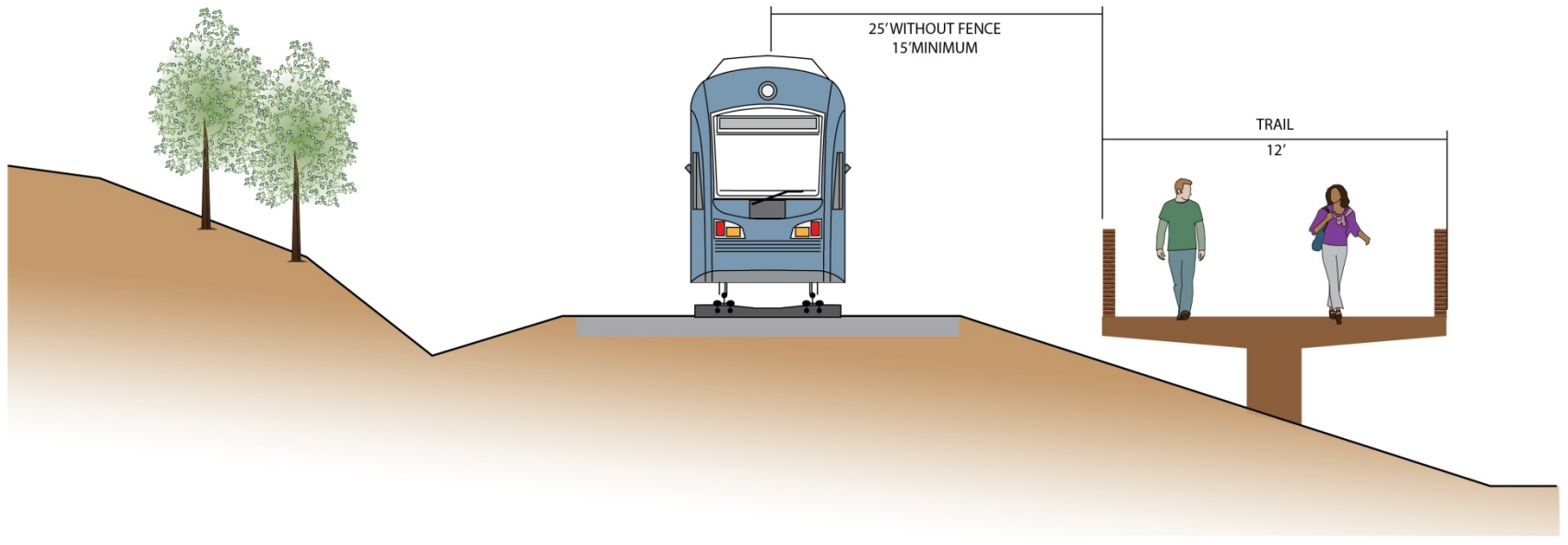
### Section 2 - Fill



# *Eastside Rail Corridor*

## Section

### Section 5 - Bridge



# Snohomish County Eastside Rail Corridor Next Steps

1. Port of Seattle trail easement acquisition
2. Scoping environmental and design work for entire trail segment
3. Financing/Grants/multi-agency partnership to construct initial trail segment.
4. Support efforts to launch excursion train





# Snohomish County Freight Service



# Snohomish County Freight Service

TIME IN: \_\_\_\_\_  
TIME OUT: \_\_\_\_\_

**\*\*SHIP COMPLETE**

CON  
SIGNED  
TO

SHIP  
TO

HOMDEAT 2729  
HOME DEPOT # 4728  
5120 BORGES BLVD  
GIG HARBOR, WA 98332

(253)-851-9404

Ship Via:		F.O.B. PP	Credit	Stager	Loader
OUR TRUCK		Order Taker		16	

TOEL J	DESCRIPTION





# Snohomish County Freight Service







*Click picture to play*



# Snohomish County Eastside Rail Corridor Rail Upgrade Funding Options

- FRA funding (loans)
- WSDOT short line rail funding
- Legislative support
- Public funding = public contracting protocols
  - a. Likely administered via WSDOT rail
- Private funding





# Snohomish County Freight Service





# Single Track Train in Thailand



<http://www.wimp.com/vegetablemarket/>