



King County

Capital Planning and Development Section
Parks CIP Unit

East Lake Sammamish Trail – South Sammamish Segment A Tree Preservation Plans April 24, 2015

Summary

One of King County Parks' commitments throughout the design and construction of the East Lake Sammamish Trail is to preserve significant trees whenever possible. Trees provide natural habitat for birds and wildlife, and shade and screening for trail users and neighbors. The close proximity of trees to the existing trail, design and construction of a wider trail that is safer and more accessible to people of all ages and abilities has been challenging and requires the removal of some trees.

The 95-percent design plans for South Sammamish Segment A, of the East Lake Sammamish Trail, stretching from 43rd Way SE to SE 33rd Street are complete. Understanding the sensitivities that surround tree removal, this document was prepared to assist the community in understanding the methodology used to identify and assess trees along the corridor. Results of the assessment are summarized below and also shown on the attached tree preservation plans, which correspond to the trail design plans. Please note, the tree preservation plans are preliminary, and may change as trail design progresses. The tree preservation plans will be updated after completion of the 100-percent trail design.

The summary presented in the table below and the tables at the end of the plans are intended to address significant trees. As defined in the Sammamish Municipal Code, significant trees are coniferous trees (*trees with needles*) with a diameter of 8 inches or greater and deciduous trees (*trees with leaves*) with a diameter of 12 inches or greater at breast height (DBH), or approximately 4 ½ feet above ground.

Significant Tree Identification

Metal tags were placed on significant trees in the corridor and enable adjacent property owners to take the unique identification number from the tag and compare it to the tree preservation plans to determine whether or not a tree will be removed. King County's right-of-way can vary up to 100 feet wide, so not every tree in the right-of-way has a metal tag. In general, the design team placed a metal tag on all significant trees within 10 feet of the proposed clearing and grubbing limits. There were 250 significant trees identified in the South Sammamish Segment A corridor. There are many more significant trees in the corridor that do not have a metal tag. The absence of a metal tag on a significant tree typically means that the tree will be retained.

Updates to the Plans

Through the public involvement process, adjacent property owners and City of Sammamish staff expressed an interest in understanding the disposition of trees that do not meet the City's definition for significance, as well as large screening shrubs. Some of this additional landscaping has been added to the 95-percent plans, where practical. The trees that are significant and have been evaluated by the arborist are shown in green and have the unique identification number. Trees that are either not significant or significant but not close enough for arborist' evaluation are shown in black and grey line type respectively.



Arborist's Assessment

King County's arborist completed an assessment of significant trees in the corridor that (1) may be affected by trail improvements or (2) present a hazard to trail users and adjacent property owners. The trees that will be affected by trail improvements are typically inside the clearing and grubbing limits or within 10 feet of the clearing and grubbing limits. The design team has reviewed the arborists' assessment and concurs.

The arborist field reviewed the location of the 250 identified significant trees with respect to the 95-percent design plans. The arborist assessment includes the following:

- (1) A general inventory of significant trees within the proposed clearing and grubbing limits. These trees are coded with an "X" in the attached tree preservation plans if the trees must be removed or "M" if there is possibility of saving the trees but need to be monitored during construction.
- (2) A more detailed evaluation of significant trees close to or just outside the clearing and grubbing limits that may be adversely impacted by trail improvements. The arborist evaluated the species, size, health, and proximity to construction to make a determination of "X" – remove, "S" – save (retain), or "M" – monitor during construction.
- (3) A more detailed evaluation of significant trees in the corridor that show outward signs of decline or significant defect resulting in a possible safety hazard. The arborist evaluated the species, size, health, and proximity to construction to make a determination of "X" – remove, "S" – save (retain), or "M" – monitor during construction.

The marking on the attached plans are as follows:

- X – remove
- S – save
- M – monitor
- PH - potential hazard

Results of the Assessment

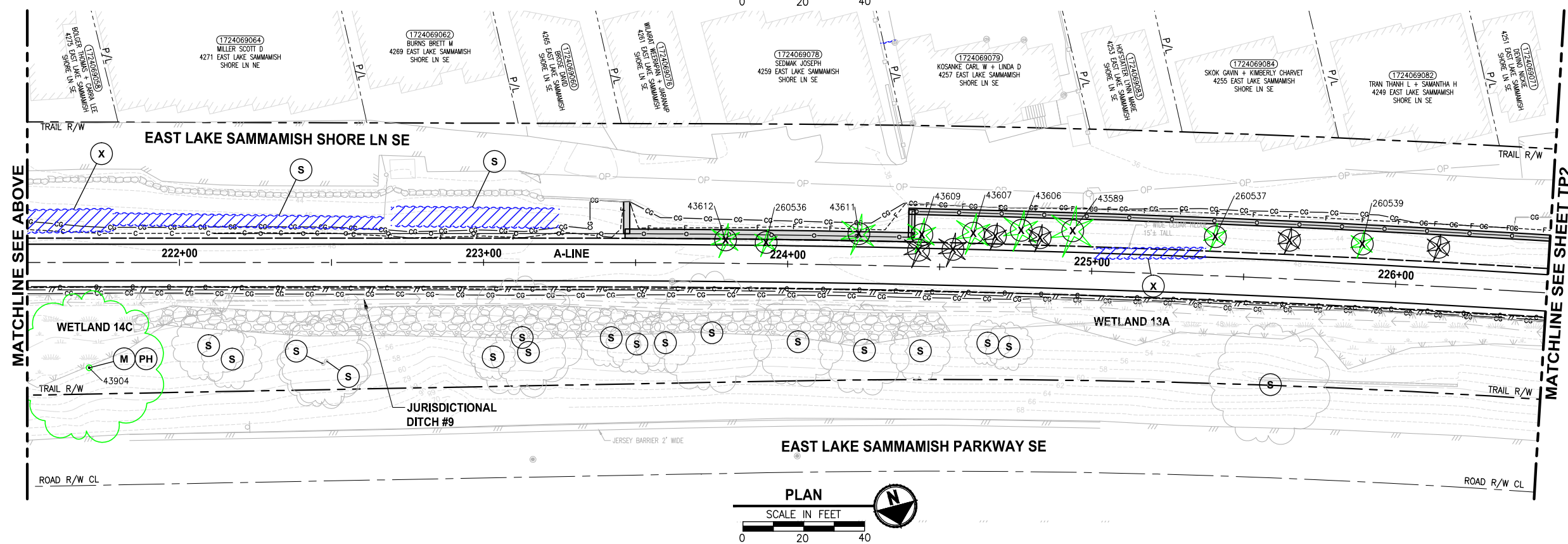
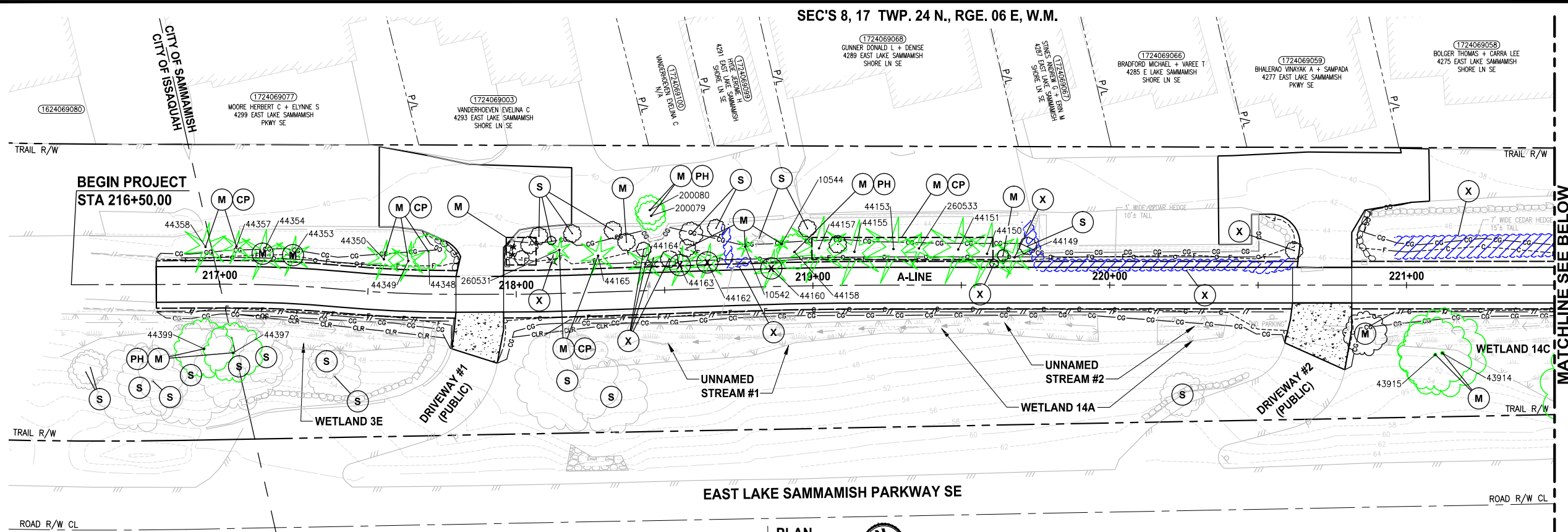
The following table summarizes the results of the assessment. The details are presented in the attached tree preservation plans.

TOTAL SIGNIFICANT TREES ASSESSED BY ARBORIST	250
ARBORIST ASSESSMENT	
Significant trees to be saved	221
No action needed	121
Monitor – could still be affected by construction	100
Significant trees to be removed	29
Within clearing and grubbing limits	28
Outside clearing and grubbing limits	1

Of the 250 significant trees assessed by the arborist, 29 significant trees will be removed. Of the 29 significant trees to be removed, only one tree meets the Sammamish Municipal Code definition of a heritage tree (22-inch or greater DBH).



The goal for the 100 significant trees identified for monitoring is to save them if possible. Please note, most the trees are either within clearing and grubbing limit or close enough to the clearing and grubbing limits where they could be impacted by trail construction. The arborist will monitor these trees and evaluate any damages as a result of construction activities. If the Arborist believes the long term health of the tree has been compromised and recommends removal of the tree, King County will notify the City of Sammamish. King County will also notify the adjacent property owners prior to tree removal. Some of the trees are being monitored, not because of concerns about construction, but poor health. These trees are additional noted on the plans with a "PH" (potential hazard).



- TREE REMOVAL AND PRESERVATION NOTES:**

- (S)** SAVE
- (X)** REMOVE
- (M)** MONITOR
- (RP)** ROOT PRUNE
- (CP)** CLEARANCE PRUNE
- (RD)** REMOVE DEAD STEM
- (H)** REMOVE ALL BRANCHES AND LEAVE 18" TALL TRUNK AS HABITAT SNAG
- (PH)** POTENTIAL HAZARD

LEGEND:

-
- CG CG CLEARING AND GRUBBING
- CLR CLR CLEARING LIMIT
- 10550 10550
- SIGNIFICANT TREE EVALUATED BY ARBORIST
- NON-SIGNIFICANT TREE
- TREES OUTSIDE OF PROJECT AREA
- HEDGES

GENERAL NOTES:

1. TREES WITHIN 10 FEET OUTSIDE OF THE CLEARING AND GRUBBING LIMITS HAVE BEEN ASSESSED BY AN ARBORIST. ACTIVITIES BY THE CONTRACTOR OR KING COUNTY HAVE BEEN IDENTIFIED IN THE "TREE REMOVAL AND PRESERVATION NOTES" ABOVE.
2. TREES NOT OTHERWISE NOTED FOR ACTION ON THE PLANS ARE TYPICALLY INTENDED TO BE MAINTAINED AND PRESERVED ON SITE.
3. NOT ALL NON-SIGNIFICANT TREES, HEDGES AND ARBORVITAE ARE IN THE SURVEY

CITY OF SAMMAMISH APPROVAL	
City Engineer	Date
Community Development	Date

DPER ACTIVITY NUMBER
GRDE14-0052 / SHORE14-0022
FEDERAL AID #

95 % REVIEW SUBMITTAL
NOT FOR CONSTRUCTION

▷	REVISIONS	DATE	BY	DESIGNED DESIGNED BY
				DRAWN DRAWN BY
				CHECKED CHECKED BY
				APPROVED O. KIKUTA

ONE INCH AT FULL SCALE
IF NOT, SCALE ACCORDINGLY

FILE NAME
BL1521075P20T03TP-01
JOB No.
554-1521-075 P20T03
DATE
APRIL 2015

PRELIMINARY

Parametrix
ENGINEERING . PLANNING . ENVIRONMENTAL SCIENCES

719 2ND AVENUE, SUITE 200 | SEATTLE, WA 98101
P 206.394.3700
WWW.PARAMETRIX.COM

PROJECT NAME

**EAST LAKE SAMMAMISH
MASTER PLAN TRAIL
SOUTH SAMMAMISH SEGMENT A**

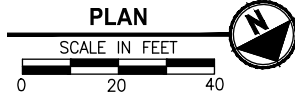
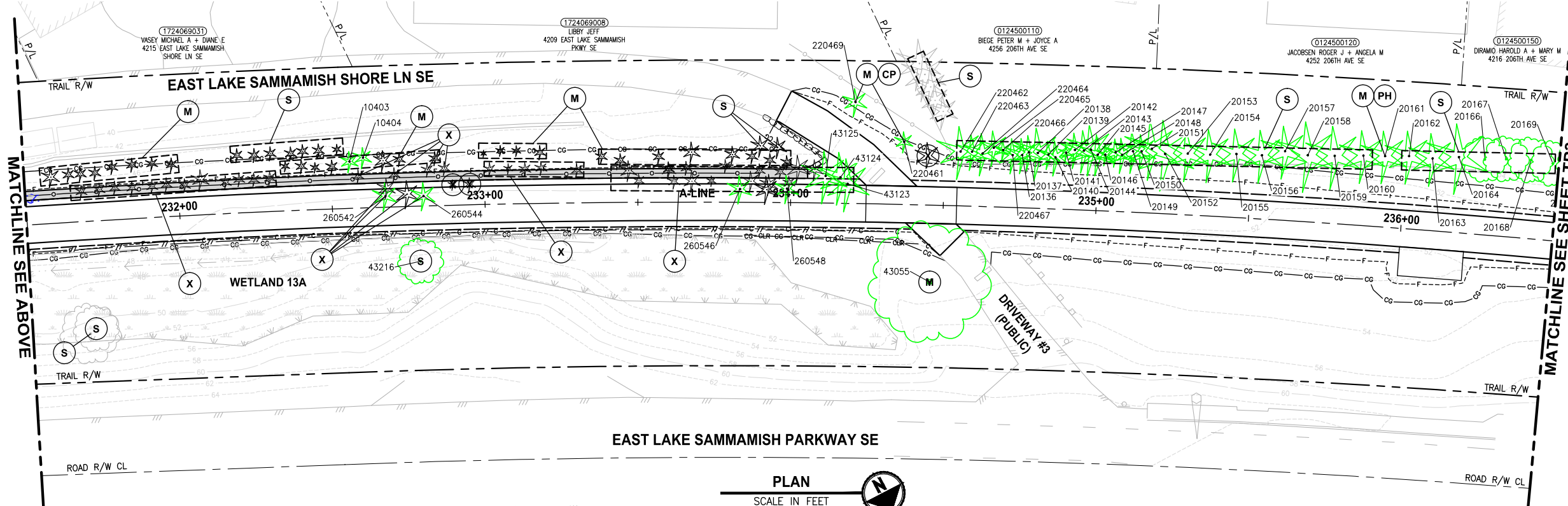
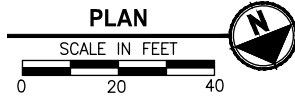
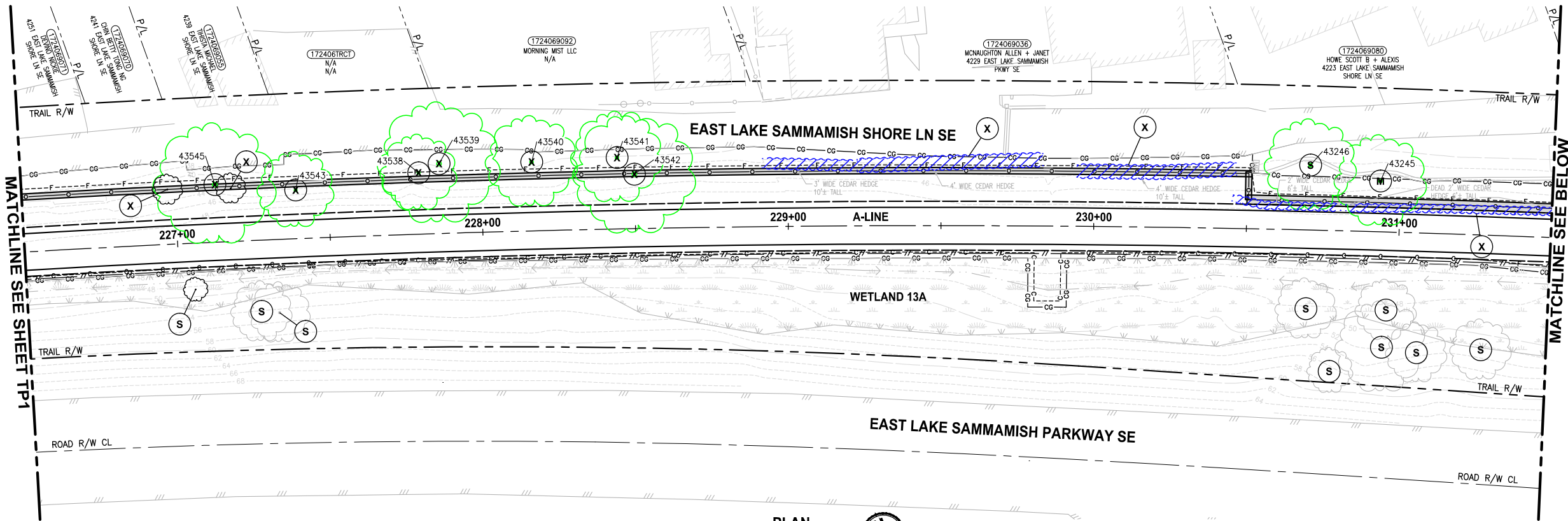
SAMMAMISH, WA

TREE PRESERVATION PLAN

SHEET NO.
79 OF 78

TP1

SEC'S 8, 17 TWP. 24 N., RGE. 06 E, W.M.



TREE REMOVAL AND PRESERVATION NOTES:

- (S) SAVE
- (X) REMOVE
- (M) MONITOR
- (RP) ROOT PRUNE
- (CP) CLEARANCE PRUNE
- (RD) REMOVE DEAD STEM
- (H) REMOVE ALL BRANCHES AND LEAVE 18' TALL TRUNK AS HABITAT SNAG
- (PH) POTENTIAL HAZARD

LEGEND:

- CG CG CLEARING AND GRUBBING
- CLR CLR CLEARING LIMIT
- 10550 10550 SIGNIFICANT TREE EVALUATED BY ARBORIST
- NON-SIGNIFICANT TREE
- TREES OUTSIDE OF PROJECT AREA
- HEDGES

GENERAL NOTES:

- TREES WITHIN 10 FEET OUTSIDE OF THE CLEARING AND GRUBBING LIMITS HAVE BEEN ASSESSED BY AN ARBORIST. ACTIVITIES BY THE CONTRACTOR OR KING COUNTY HAVE BEEN IDENTIFIED IN THE "TREE REMOVAL AND PRESERVATION NOTES" ABOVE.
- TREES NOT OTHERWISE NOTED FOR ACTION ON THE PLANS ARE TYPICALLY INTENDED TO BE MAINTAINED AND PRESERVED ON SITE.
- NOT ALL NON-SIGNIFICANT TREES, HEDGES AND ARBORVITAE ARE IN THE SURVEY

CITY OF SAMMAMISH APPROVAL	
City Engineer	Date
Community Development	Date

DPER ACTIVITY NUMBER
GRDE14-0052 / SHORE14-0022
FEDERAL AID #

95 % REVIEW SUBMITTAL
NOT FOR CONSTRUCTION

REVISIONS	DATE	BY	DESIGNED	DESIGNED BY
			DRAWN	DRAWN BY
			CHECKED	CHECKED BY
			APPROVED	O. KIKUTA

ONE INCH AT FULL SCALE.
IF NOT, SCALE ACCORDINGLY
FILE NAME
BL1521075P20T03TP-01
JOB No.
554-1521-075 P20T03
DATE
APRIL 2015

PRELIMINARY

Parametrix
ENGINEERING · PLANNING · ENVIRONMENTAL SCIENCES
719 2ND AVENUE, SUITE 200 | SEATTLE, WA 98104
P 206.394.3700
WWW.PARAMETRIX.COM

PROJECT NAME
**EAST LAKE SAMMAMISH
MASTER PLAN TRAIL
SOUTH SAMMAMISH SEGMENT A**
SAMMAMISH, WA

TREE PRESERVATION PLAN

SHEET NO.
80 OF 78
TP2



- LEGEND:**

- GENERAL NOTES:**

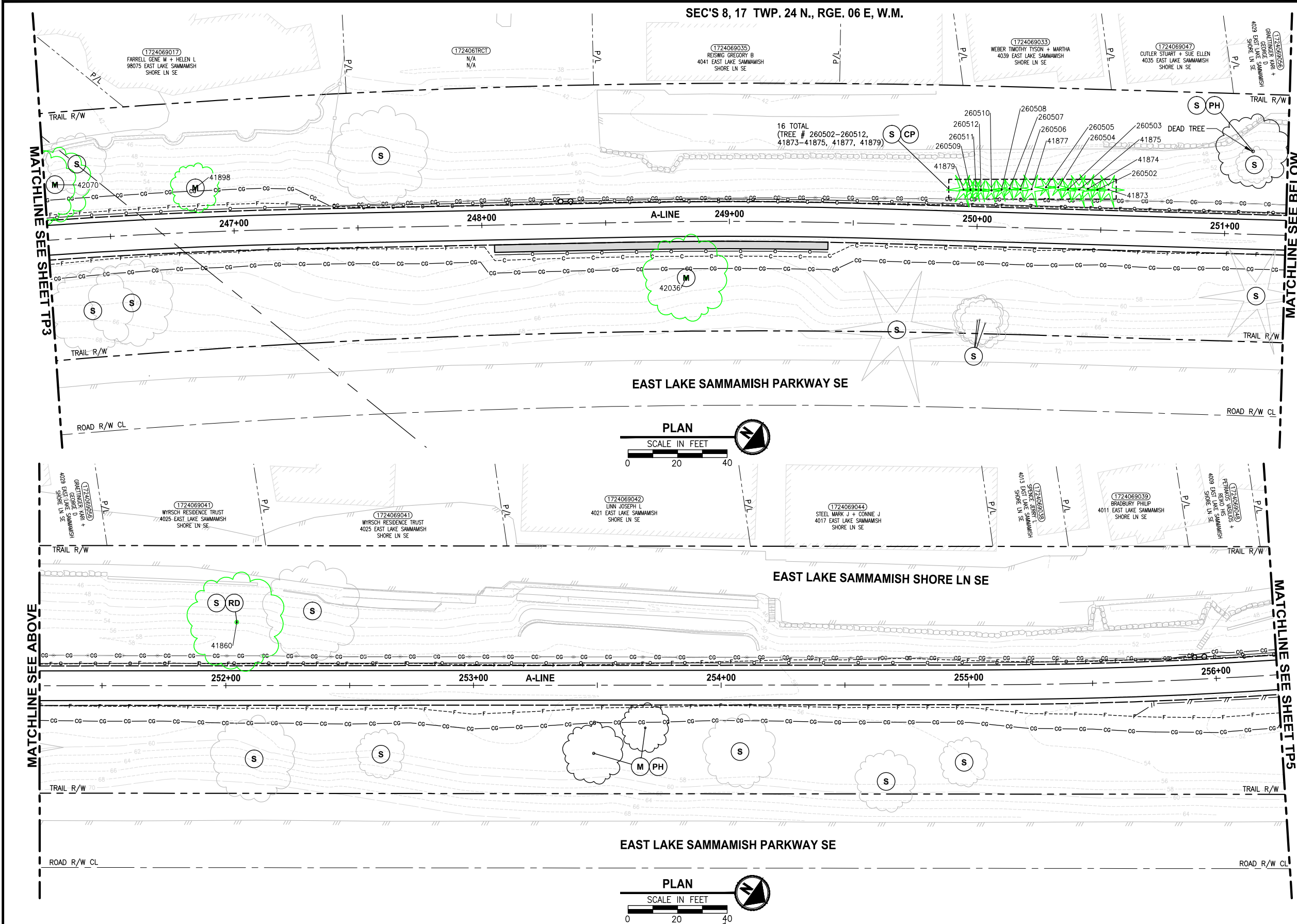
1. TREES WITHIN 10 FEET OUTSIDE OF THE CLEARING AND GRUBBING LIMITS HAVE BEEN ASSESSED BY AN ARBORIST. ACTIVITIES BY THE CONTRACTOR OR KING COUNTY HAVE BEEN IDENTIFIED IN THE "TREE REMOVAL AND PRESERVATION NOTES" ABOVE.
2. TREES NOT OTHERWISE NOTED FOR ACTION ON THE PLANS ARE TYPICALLY INTENDED TO BE MAINTAINED AND PRESERVED ON SITE.
3. NOT ALL NON-SIGNIFICANT TREES, HEDGES AND ARBORVITAE ARE IN THE SURVEY

95 % REVIEW SUBMITTAL
NOT FOR CONSTRUCTION

TP3

PRELIMINARY

PATH: U:\PSO\Projects\Clients\1521-075-ELST\99Sect\CA00\Phase 20\Task 03\DWG\ PLOTTED BY: purgubut DATE: Thursday, April 23, 2015 11:36:09 AM LAYOUT: TP4



TREE REMOVAL AND PRESERVATION NOTES:

- (S) SAVE
(X) REMOVE
(M) MONITOR
(RP) ROOT PRUNE
(CP) CLEARANCE PRUNE
(RD) REMOVE DEAD STEM
(H) REMOVE ALL BRANCHES AND LEAVE 18' TALL TRUNK AS HABITAT SNAG
(PH) POTENTIAL HAZARD

LEGEND:

- CG CG CLEARING AND GRUBBING
CLR CLR CLEARING LIMIT
10550 10550
SIGNIFICANT TREE EVALUATED BY ARBORIST
NON-SIGNIFICANT TREE
TREES OUTSIDE OF PROJECT AREA
HEDGES

GENERAL NOTES:

1. TREES WITHIN 10 FEET OUTSIDE OF THE CLEARING AND GRUBBING LIMITS HAVE BEEN ASSESSED BY AN ARBORIST. ACTIVITIES BY THE CONTRACTOR OR KING COUNTY HAVE BEEN IDENTIFIED IN THE "TREE REMOVAL AND PRESERVATION NOTES" ABOVE.
2. TREES NOT OTHERWISE NOTED FOR ACTION ON THE PLANS ARE TYPICALLY INTENDED TO BE MAINTAINED AND PRESERVED ON SITE.
3. NOT ALL NON-SIGNIFICANT TREES, HEDGES AND ARBORVITAE ARE IN THE SURVEY

CITY OF SAMMAMISH APPROVAL	
City Engineer	Date
Community Development	Date

DPER ACTIVITY NUMBER
GRDE14-0052 / SHORE14-0022
FEDERAL AID #

95 % REVIEW SUBMITTAL
NOT FOR CONSTRUCTION

REVISIONS	DATE	BY	DESIGNED DESIGNED BY
			DRAWN DRAWN BY
			CHECKED CHECKED BY
			APPROVED O. KIKUTA

ONE INCH AT FULL SCALE.
IF NOT, SCALE ACCORDINGLY

FILE NAME
BL1521075P20T03TP-01
JOB No.
554-1521-075 P20T03
DATE
APRIL 2015

PRELIMINARY

Parametrix
ENGINEERING · PLANNING · ENVIRONMENTAL SCIENCES

719 2ND AVENUE, SUITE 200 | SEATTLE, WA 98104
P 206.394.3700
WWW.PARAMETRIX.COM

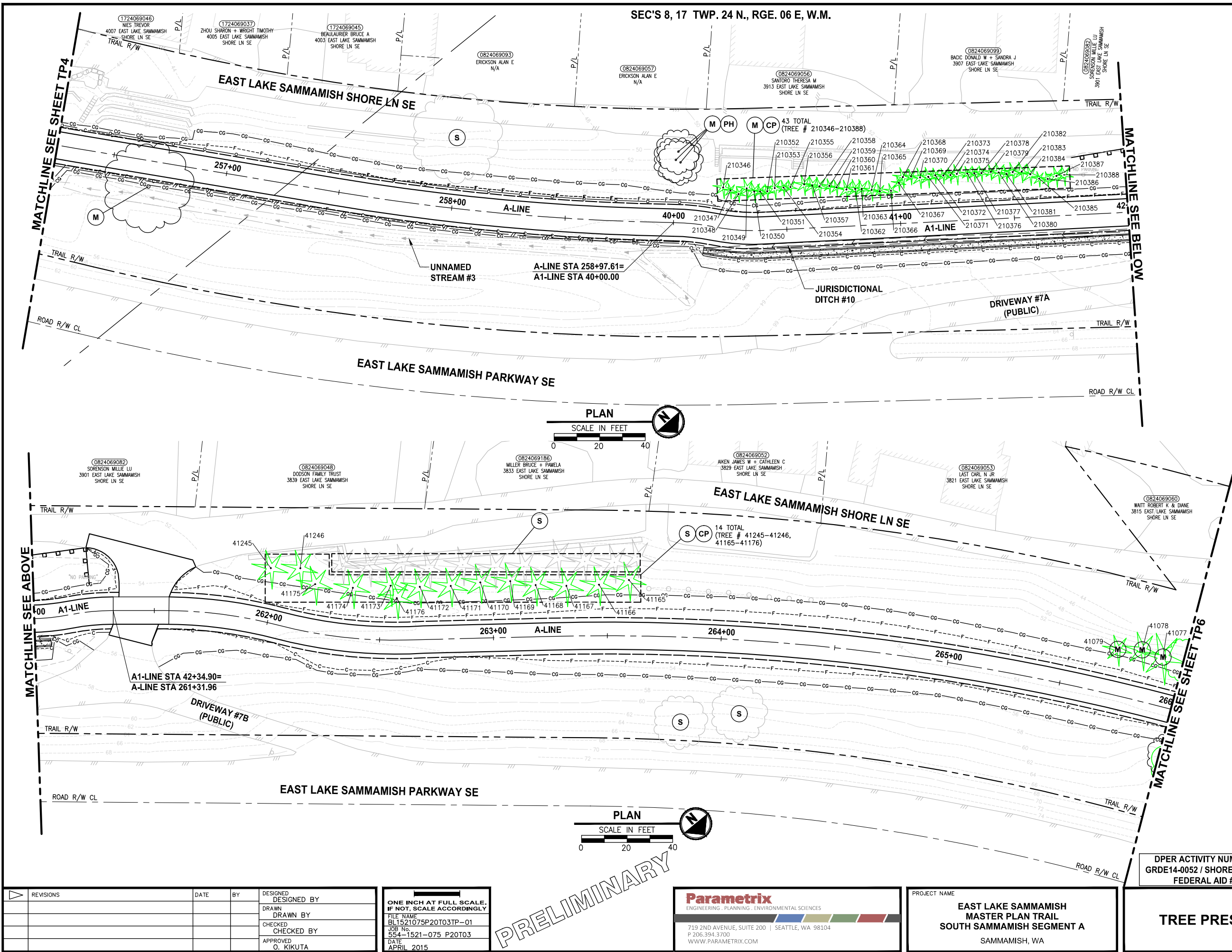
PROJECT NAME

EAST LAKE SAMMAMISH
MASTER PLAN TRAIL
SOUTH SAMMAMISH SEGMENT A
SAMMAMISH, WA

TREE PRESERVATION PLAN

SHEET NO.
82 OF 78

TP4



- TREE REMOVAL AND PRESERVATION NOTES:**

S	SAVE
X	REMOVE
M	MONITOR
RP	ROOT PRUNE
CP	CLEARANCE PRUNE
RD	REMOVE DEAD STEM
H	REMOVE ALL BRANCHES AND LEAVE 18" TALL TRUNK AS HABITAT SNAG
PH	POTENTIAL HAZARD

LEGEND:

Diagram illustrating the project area boundaries and land use types:

- CG** (CLEARING AND GRUBBING) and **CLR** (CLEARING LIMIT) boundaries are shown as lines.
- 10550** is a numerical value associated with the clearing boundaries.
- SIGNIFICANT TREE EVALUATED BY ARBORIST** is indicated by a green starburst shape.
- NON-SIGNIFICANT TREE** is indicated by a black starburst shape.
- TREES OUTSIDE OF PROJECT AREA** are indicated by grey starburst shapes.
- HEDGES** are indicated by blue wavy lines.

GENERAL NOTES:

1. TREES WITHIN 10 FEET OUTSIDE OF THE CLEARING AND GRUBBING LIMITS HAVE BEEN ASSESSED BY AN ARBORIST. ACTIVITIES BY THE CONTRACTOR OR KING COUNTY HAVE BEEN IDENTIFIED IN THE "TREE REMOVAL AND PRESERVATION NOTES" ABOVE.
2. TREES NOT OTHERWISE NOTED FOR ACTION ON THE PLANS ARE TYPICALLY INTENDED TO BE MAINTAINED AND PRESERVED ON SITE.
3. NOT ALL NON-SIGNIFICANT TREES, HEDGES AND ARBORVITAEAE ARE IN THE SURVEY

CITY OF SAMMAMISH APPROVAL	
City Engineer _____	Date _____
Community Development _____	Date _____

DPER ACTIVITY NUMBER
GRDE14-0052 / SHORE14-0022
FEDERAL AID #

95 % REVIEW SUBMITTAL
NOT FOR CONSTRUCTION

TREE PRESERVATION PLAN

SHEET NO.
83 OF 78

TP5

TREE REMOVAL AND PRESERVATION NOTES:

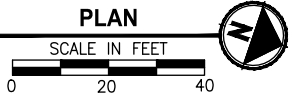
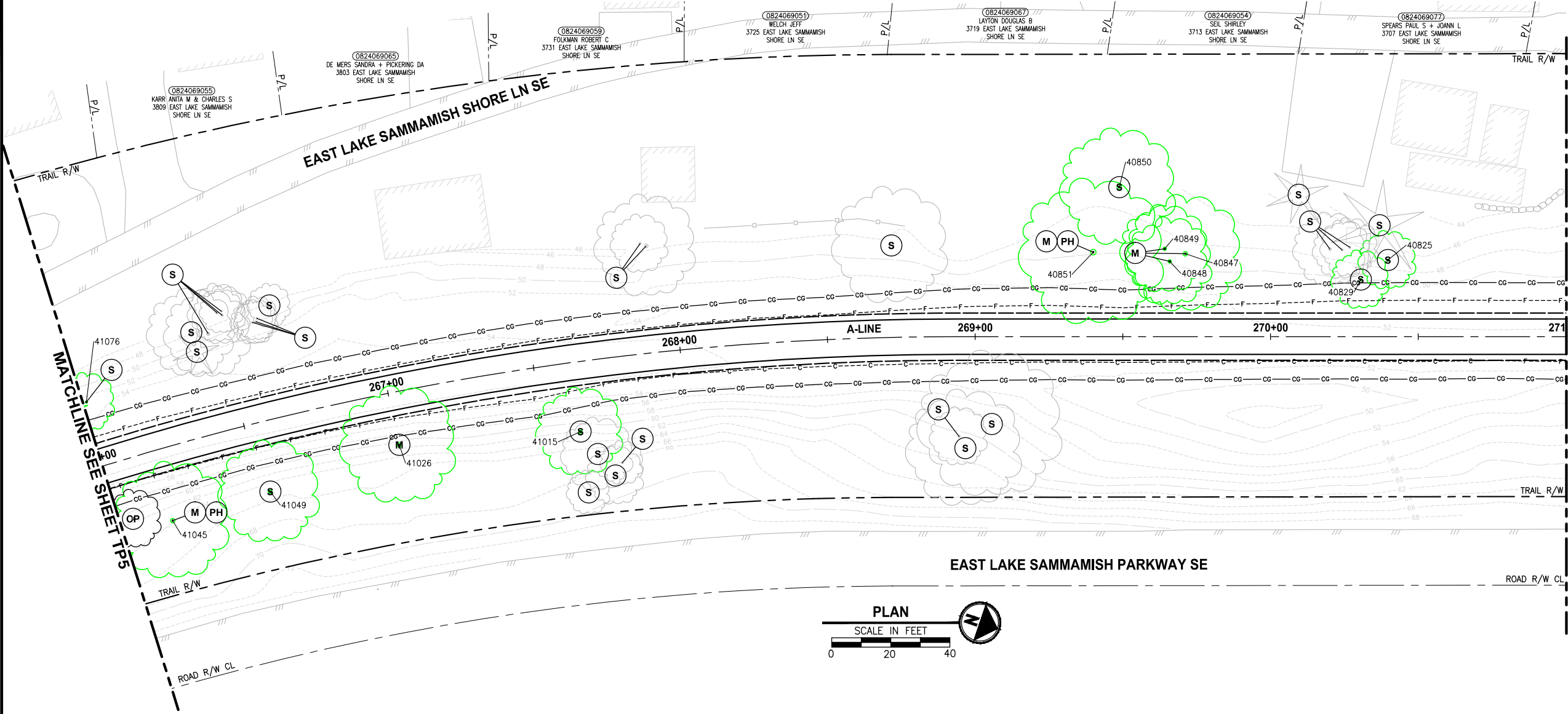
- (S) SAVE
- (X) REMOVE
- (M) MONITOR
- (RP) ROOT PRUNE
- (CP) CLEARANCE PRUNE
- (RD) REMOVE DEAD STEM
- (H) REMOVE ALL BRANCHES AND LEAVE 18' TALL TRUNK AS HABITAT SNAG
- (PH) POTENTIAL HAZARD

LEGEND:

- CG CG CLEARING AND GRUBBING
- CLR CLR CLEARING LIMIT
- 10550 10550 SIGNIFICANT TREE EVALUATED BY ARBORIST
- NON-SIGNIFICANT TREE
- TREES OUTSIDE OF PROJECT AREA
- HEDGES

GENERAL NOTES:

- TREES WITHIN 10 FEET OUTSIDE OF THE CLEARING AND GRUBBING LIMITS HAVE BEEN ASSESSED BY AN ARBORIST. ACTIVITIES BY THE CONTRACTOR OR KING COUNTY HAVE BEEN IDENTIFIED IN THE "TREE REMOVAL AND PRESERVATION NOTES" ABOVE.
- TREES NOT OTHERWISE NOTED FOR ACTION ON THE PLANS ARE TYPICALLY INTENDED TO BE MAINTAINED AND PRESERVED ON SITE.
- NOT ALL NON-SIGNIFICANT TREES, HEDGES AND ARBORVITAS ARE IN THE SURVEY



PRELIMINARY

CITY OF SAMMAMISH APPROVAL	
City Engineer	Date
Community Development	Date

DPER ACTIVITY NUMBER
GRDE14-0052 / SHORE14-0022
FEDERAL AID #

95 % REVIEW SUBMITTAL
NOT FOR CONSTRUCTION

REVISIONS	DATE	BY	DESIGNED	DESIGNED BY
			DRAWN	DRAWN BY
			CHECKED	CHECKED BY
			APPROVED	O. KIKUTA

ONE INCH AT FULL SCALE.
IF NOT, SCALE ACCORDINGLY
FILE NAME
BL1521075P20T03TP-01
JOB No.
554-1521-075 P20T03
DATE
APRIL 2015

Parametrix
ENGINEERING . PLANNING . ENVIRONMENTAL SCIENCES
719 2ND AVENUE, SUITE 200 | SEATTLE, WA 98104
P 206.394.3700
WWW.PARAMETRIX.COM

PROJECT NAME
**EAST LAKE SAMMAMISH
MASTER PLAN TRAIL
SOUTH SAMMAMISH SEGMENT A**
SAMMAMISH, WA

TREE PRESERVATION PLAN

SHEET NO.
84 OF 78
TP6

TREE REMOVAL AND PRESERVATION NOTES:

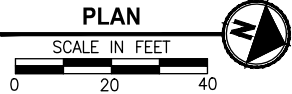
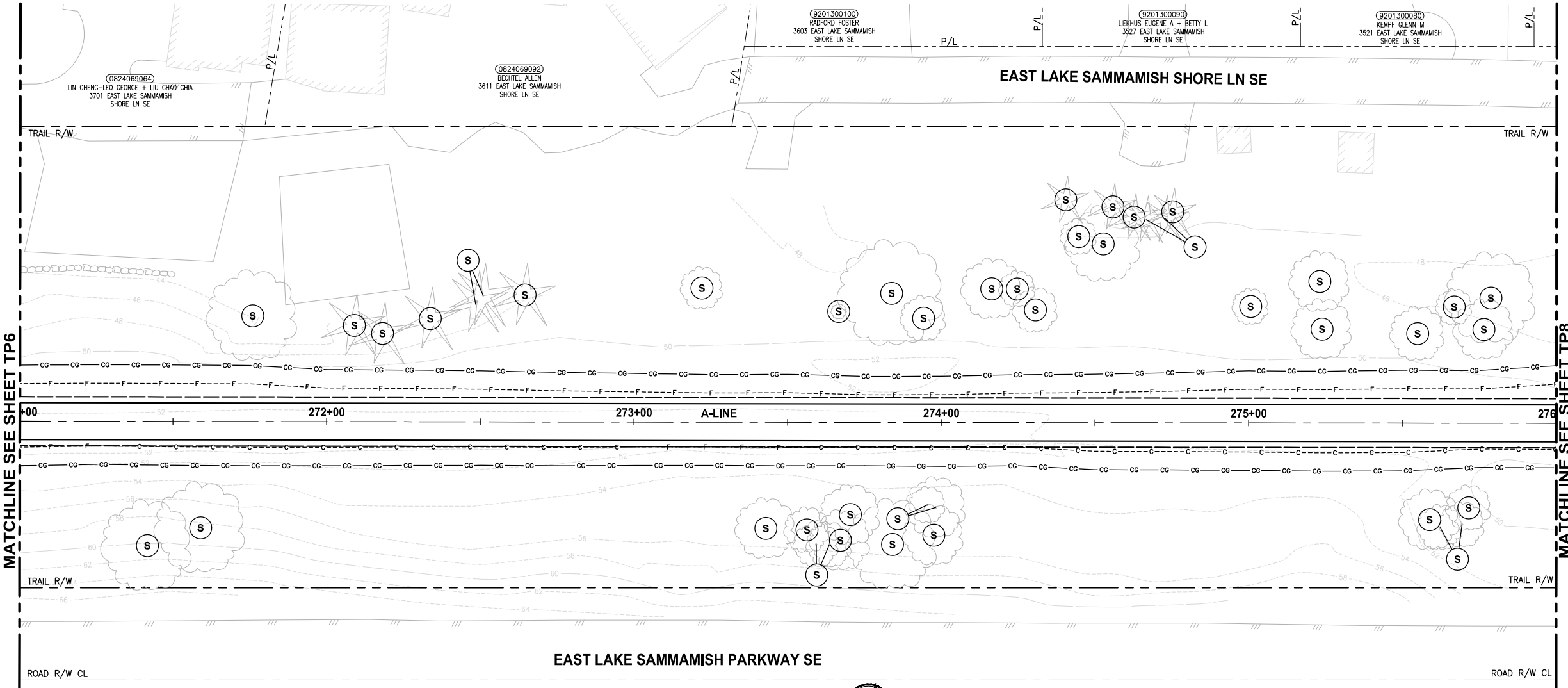
- (S) SAVE
- (X) REMOVE
- (M) MONITOR
- (RP) ROOT PRUNE
- (CP) CLEARANCE PRUNE
- (RD) REMOVE DEAD STEM
- (H) REMOVE ALL BRANCHES AND LEAVE 18' TALL TRUNK AS HABITAT SNAG
- (PH) POTENTIAL HAZARD

LEGEND:

- CG CG CLEARING AND GRUBBING
- CLR CLR CLEARING LIMIT
- 10550 SIGNIFICANT TREE EVALUATED BY ARBORIST
- NON-SIGNIFICANT TREE
- TREES OUTSIDE OF PROJECT AREA
- HEDGES

GENERAL NOTES:

- TREES WITHIN 10 FEET OUTSIDE OF THE CLEARING AND GRUBBING LIMITS HAVE BEEN ASSESSED BY AN ARBORIST. ACTIVITIES BY THE CONTRACTOR OR KING COUNTY HAVE BEEN IDENTIFIED IN THE "TREE REMOVAL AND PRESERVATION NOTES" ABOVE.
- TREES NOT OTHERWISE NOTED FOR ACTION ON THE PLANS ARE TYPICALLY INTENDED TO BE MAINTAINED AND PRESERVED ON SITE.
- NOT ALL NON-SIGNIFICANT TREES, HEDGES AND ARBORVITAE ARE IN THE SURVEY



PRELIMINARY

CITY OF SAMMAMISH APPROVAL	
City Engineer _____	Date _____
Community Development _____	Date _____

DPER ACTIVITY NUMBER
GRDE14-0052 / SHORE14-0022
FEDERAL AID #

95 % REVIEW SUBMITTAL
NOT FOR CONSTRUCTION

REVISIONS	DATE	BY	DESIGNED DESIGNED BY
			DRAWN DRAWN BY
			CHECKED CHECKED BY
			APPROVED O. KIKUTA

ONE INCH AT FULL SCALE.
IF NOT, SCALE ACCORDINGLY

FILE NAME
BL1521075P20T03TP-01

JOB No.
554-1521-075 P20T03

DATE
APRIL 2015

Parametrix
ENGINEERING . PLANNING . ENVIRONMENTAL SCIENCES

719 2ND AVENUE, SUITE 200 | SEATTLE, WA 98104
P 206.394.3700
WWW.PARAMETRIX.COM

PROJECT NAME
EAST LAKE SAMMAMISH
MASTER PLAN TRAIL
SOUTH SAMMAMISH SEGMENT A
SAMMAMISH, WA

TREE PRESERVATION PLAN

SHEET NO.
85 OF 78

TP7

TREE REMOVAL AND PRESERVATION NOTES:

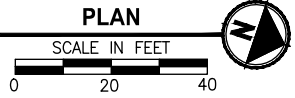
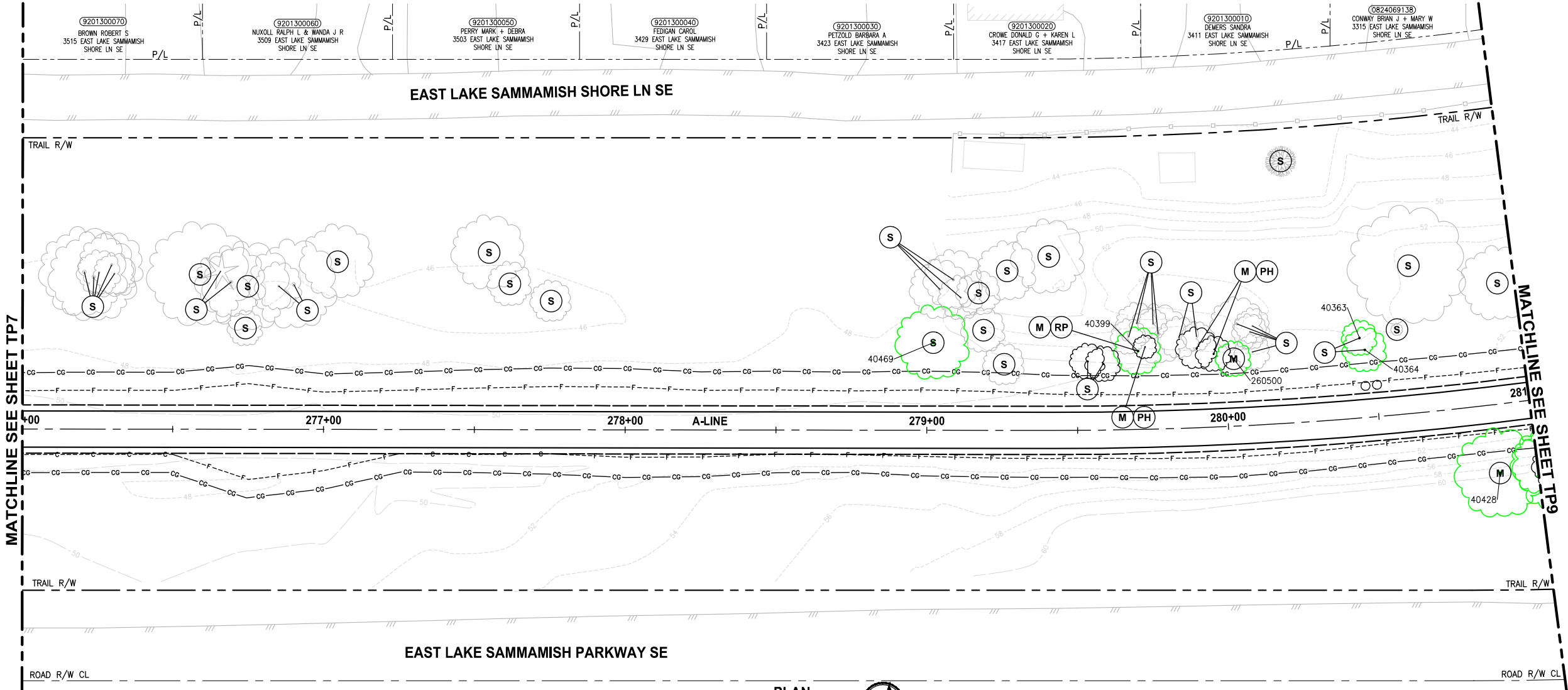
- (S) SAVE
- (X) REMOVE
- (M) MONITOR
- (RP) ROOT PRUNE
- (CP) CLEARANCE PRUNE
- (RD) REMOVE DEAD STEM
- (H) REMOVE ALL BRANCHES AND LEAVE 18' TALL TRUNK AS HABITAT SNAG
- (PH) POTENTIAL HAZARD

LEGEND:

- CG CG CLEARING AND GRUBBING
- CLR CLR CLEARING LIMIT
- 10550 10550 SIGNIFICANT TREE EVALUATED BY ARBORIST
- NON-SIGNIFICANT TREE
- TREES OUTSIDE OF PROJECT AREA
- HEDGES

GENERAL NOTES:

- TREES WITHIN 10 FEET OUTSIDE OF THE CLEARING AND GRUBBING LIMITS HAVE BEEN ASSESSED BY AN ARBORIST. ACTIVITIES BY THE CONTRACTOR OR KING COUNTY HAVE BEEN IDENTIFIED IN THE "TREE REMOVAL AND PRESERVATION NOTES" ABOVE.
- TREES NOT OTHERWISE NOTED FOR ACTION ON THE PLANS ARE TYPICALLY INTENDED TO BE MAINTAINED AND PRESERVED ON SITE.
- NOT ALL NON-SIGNIFICANT TREES, HEDGES AND ARBORVITAE ARE IN THE SURVEY



CITY OF SAMMAMISH APPROVAL	
City Engineer _____	Date _____
Community Development _____	Date _____

DPER ACTIVITY NUMBER
GRDE14-0052 / SHORE14-0022
FEDERAL AID #

95 % REVIEW SUBMITTAL
NOT FOR CONSTRUCTION

REVISIONS	DATE	BY	DESIGNED	DESIGNED BY
			DRAWN	DRAWN BY
			CHECKED	CHECKED BY
			APPROVED	O. KIKUTA

ONE INCH AT FULL SCALE.
IF NOT, SCALE ACCORDINGLY

FILE NAME
BL1521075P20T03TP-01

JOB No.
554-1521-075 P20T03

DATE
APRIL 2015

PRELIMINARY

Parametrix
ENGINEERING . PLANNING . ENVIRONMENTAL SCIENCES

719 2ND AVENUE, SUITE 200 | SEATTLE, WA 98104
P 206.394.3700
WWW.PARAMETRIX.COM

PROJECT NAME

**EAST LAKE SAMMAMISH
MASTER PLAN TRAIL
SOUTH SAMMAMISH SEGMENT A**

SAMMAMISH, WA

TREE PRESERVATION PLAN

SHEET NO.
86 OF 78

TP8

SEC'S 8, 17 TWP. 24 N., RGE. 06 E, W.M.

TREE REMOVAL AND PRESERVATION NOTES:

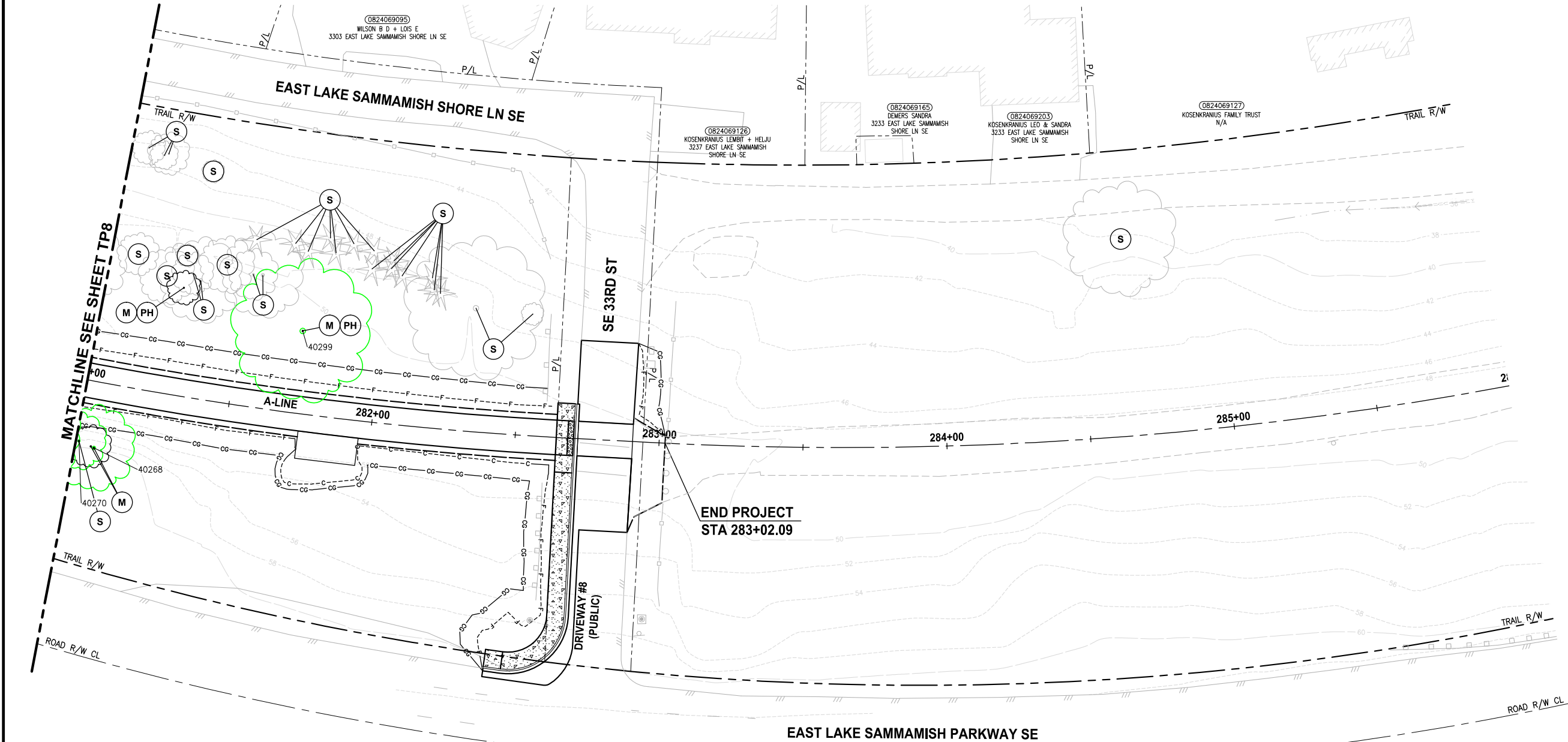
- (S) SAVE
(X) REMOVE
(M) MONITOR
(RP) ROOT PRUNE
(CP) CLEARANCE PRUNE
(RD) REMOVE DEAD STEM
(H) REMOVE ALL BRANCHES AND LEAVE 18' TALL TRUNK AS HABITAT SNAG
(PH) POTENTIAL HAZARD

LEGEND:

- CG CG CLEARING AND GRUBBING
CLR CLR CLEARING LIMIT
10550 10550
SIGNIFICANT TREE EVALUATED BY ARBORIST
NON-SIGNIFICANT TREE
TREES OUTSIDE OF PROJECT AREA
HEDGES

GENERAL NOTES:

- TREES WITHIN 10 FEET OUTSIDE OF THE CLEARING AND GRUBBING LIMITS HAVE BEEN ASSESSED BY AN ARBORIST. ACTIVITIES BY THE CONTRACTOR OR KING COUNTY HAVE BEEN IDENTIFIED IN THE "TREE REMOVAL AND PRESERVATION NOTES" ABOVE.
- TREES NOT OTHERWISE NOTED FOR ACTION ON THE PLANS ARE TYPICALLY INTENDED TO BE MAINTAINED AND PRESERVED ON SITE.
- NOT ALL NON-SIGNIFICANT TREES, HEDGES AND ARBORVITAE ARE IN THE SURVEY



CITY OF SAMMAMISH APPROVAL	
City Engineer _____	Date _____
Community Development _____	Date _____

DPER ACTIVITY NUMBER
GRDE14-0052 / SHORE14-0022
FEDERAL AID #

95 % REVIEW SUBMITTAL
NOT FOR CONSTRUCTION

REVISIONS	DATE	BY	DESIGNED DESIGNED BY
			DRAWN DRAWN BY
			CHECKED CHECKED BY
			APPROVED O. KIKUTA

ONE INCH AT FULL SCALE.
IF NOT, SCALE ACCORDINGLY
FILE NAME
BL1521075P20T03TP-01
JOB No.
554-1521-075 P20T03
DATE
APRIL 2015

PRELIMINARY

Parametrix
ENGINEERING . PLANNING . ENVIRONMENTAL SCIENCES
719 2ND AVENUE, SUITE 200 | SEATTLE, WA 98104
P 206.394.3700
WWW.PARAMETRIX.COM

PROJECT NAME
**EAST LAKE SAMMAMISH
MASTER PLAN TRAIL
SOUTH SAMMAMISH SEGMENT A**
SAMMAMISH, WA

TREE PRESERVATION PLAN

SHEET NO.
87 OF 78
TP9

TREE DESCRIPTION AND RECOMMENDATIONS

Tree #	Species	DBH	Save	Remove	Prune	Monitor	Potential Hazard	Comments
10403	Douglas-fir	8				1		within C & G
10404	Douglas-fir	8						within C & G
10542	bald cypress	9				1		within C & G
10544	white fir	8				1		within C & G
20136	Leyland cypress	8	1					no concerns
20137	Leyland cypress	14	1					no concerns
20138	Leyland cypress	13	1					no concerns
20139	Leyland cypress	10	1					no concerns
20140	Leyland cypress	12	1					no concerns
20141	Leyland cypress	10	1					no concerns
20142	Leyland cypress	13	1					no concerns
20143	Leyland cypress	15	1					no concerns
20144	Leyland cypress	16	1					no concerns
20145	Leyland cypress	17	1					no concerns
20146	Leyland cypress	14	1					no concerns
20147	Leyland cypress	10	1					no concerns
20148	Leyland cypress	11	1					no concerns
20149	Leyland cypress	10	1					no concerns
20150	Leyland cypress	15	1					no concerns
20151	Leyland cypress	11	1					no concerns
20152	Leyland cypress	14	1					no concerns
20153	Leyland cypress	12	1					no concerns
20154	Leyland cypress	16	1					no concerns
20155	Leyland cypress	14	1					no concerns
20156	Leyland cypress	18	1					no concerns
20157	Leyland cypress	14	1					no concerns
20158	Leyland cypress	17	1					no concerns
20159	Leyland cypress	16	1					no concerns
20160	Leyland cypress	15	1					no concerns
20161	Leyland cypress	20				1	1	forked top, codominant stems, monitor
20162	Leyland cypress	16	1					no concerns
20163	Leyland cypress	15	1					no concerns
20164	Leyland cypress	18	1					no concerns
20166	Leyland cypress	16	1					no concerns
20167	Leyland cypress	15	1					no concerns
20168	Leyland cypress	15	1					no concerns
20169	Leyland cypress	20	1					no concerns
20170	Leyland cypress	16	1					no concerns
20171	white spruce	8	1					no concerns
20172	Leyland cypress	16	1					no concerns
20173	Leyland cypress	20	1					no concerns
20174	Leyland cypress	17	1					no concerns
20175	Leyland cypress	14	1					no concerns
20176	Leyland cypress	15	1					no concerns
20177	Leyland cypress	15	1					no concerns
20178	Leyland cypress	18	1					no concerns
20179	Leyland cypress	18	1					no concerns
20180	Leyland cypress	16	1					no concerns
20181	Leyland cypress	16	1					no concerns
20182	Leyland cypress	12	1					no concerns
20183	Leyland cypress	16	1					no concerns
20184	Leyland cypress	16	1					no concerns
20185	Leyland cypress	18	1					no concerns
20186	Leyland cypress	14	1					no concerns
20187	Leyland cypress	20	1					no concerns
20188	Leyland cypress	16	1					no concerns
20189	Leyland cypress	20	1					no concerns
40268	big leaf maple	20, 17, 5				1		previous stem failure
40270	big leaf maple	18	1					no concerns
40299	black cottonwood	30,22				1	1	fork, codominant stems, problem in near future
40363	black cottonwood	12	1					leans away from trail
40364	black cottonwood	18	1					natural lean
40399	black cottonwood	15			root prune	1		leans parallel to trail, large surface root extending into trail, root prune
40428	big leaf maple	10, 15, 11				1		one stem with 30 degree lean east
40469	black cottonwood	24	1					no concerns
40825	big leaf maple	15	1					old wound north side
40829	big leaf maple	13	1					
40847	big leaf maple	30,26				1		trunk covered in ivy inhibiting assessment, remove ivy
40848	big leaf maple	19				1		leans to trail, ivy inhibiting assessment, remove ivy
40849	big leaf maple	24				1		leans away from trail, remove ivy
40850	big leaf maple 7	16-26	1					appears sound
40851	big leaf maple	36				1	1	forks at 6', small live crown, dead codominant stem, covered in ivy, high risk
41015	big leaf maple	17	1					large scaffold branches
41026	Oregon ash	13,14				1		no concerns
41045	big leaf maple	22,20,18				1	1	previous stem failure, soft rot fungus, high risk
41049	Oregon ash	9,12,10	1					no concerns
41076	black cottonwood	20	1					near trail, save
41077	Douglas-fir	13				1		near trail, save and monitor
41078	Scots pine	11, 4				1		sequoia pitch moth, co dominant stems
41079	Scots pine	9				1		sequoia pitch moth, heavy infestation
41165	Leyland cypress	11	1		yes			minor anticipated impactct, clearance pruning may be necessary
41166	Leyland cypress	11	1		yes			minor anticipated impactct, clearance pruning may be necessary
41167	Leyland cypress	10	1		yes			minor anticipated impactct, clearance pruning may be necessary
41168	Leyland cypress	10	1		yes			minor anticipated impactct, clearance pruning may be necessary
41169	Leyland cypress	9	1		yes			minor anticipated impactct, clearance pruning may be necessary
41170	Leyland cypress	9	1		yes			minor anticipated impactct, clearance pruning may be necessary
41171	Leyland cypress	10	1		yes			minor anticipated impactct, clearance pruning may be necessary
41172	Leyland cypress	10	1		yes			minor anticipated impactct, clearance pruning may be necessary
41173	Leyland cypress	8	1		yes			minor anticipated impactct, clearance pruning may be necessary
41174	Leyland cypress	9	1		yes			minor anticipated impactct, clearance pruning may be necessary
41175	Leyland cypress	10	1		yes			minor anticipated impactct, clearance pruning may be necessary
41176	Leyland cypress	8	1		yes			minor anticipated impactct, clearance pruning may be necessary
41245	Leyland cypress	11	1		yes			minor anticipated impactct, clearance pruning may be necessary
41246	Leyland cypress	10	1		yes			minor anticipated impactct, clearance pruning may be necessary
41860	big leaf maple	30	1		yes		1	remove dead stem-hazardous to trail
41873	Leyland cypress	8	1		yes			minor anticipated impactct, clearance pruning may be necessary
41874	Leyland cypress	8	1		yes			minor anticipated impactct, clearance pruning may be necessary
41875	Leyland cypress	8	1		yes			minor anticipated impactct, clearance pruning may be necessary
41877	Leyland cypress	8	1		yes			minor anticipated impactct, clearance pruning may be necessary

SEC'S 8, 17 TWP. 24 N., RGE. 06 E, W.M.

Tree #	Species	DBH	Save	Remove	Prune	Monitor	Potential Hazard	Comments
41879	Leyland cypress	8	1		yes			minor anticipated impactct, clearance pruning may be necessary
41898	big leaf maple	14				1		co dominant stems, foliage diseasee
42036	black cottonwood	38				1	1	mature, problematic, arborist recommends removal
42070	Oregon ash	14, 10				1		co dominant stems
42071	big leaf maple	18				1	1	dead codominant stem, problematic, arborist recomments removal
42180	Sargent cherry	17	1		yes			clearance prune
42189	Norwayspruce	15			yes	1		extensive sapsucker damage, within C & G, clearance prune
42190	Douglas-fir	19			yes	1		within C & G, requires clearance pruning/crown raising
42298	Pacific willow	14, 16	1		yes			forks at 2', one large branch leans over the trail, prune back
42312	red alder	12				1	1	broken top, decline, extensive decay, arborist recomments removal
42314	Austrian pine	12				1		co dominant stems, close to clearing limit
42316	Austrian pine	8	1					
42317	Austrian pine	11	1					
42318	Austrian pine	10	1					forks at 10'
42329	Oregon ash	13	1					co dominant stems, some foliage discoloration
42337	black cottonwood 2	30,40				1		overmature
42338	black cottonwood	18				1		phototropic lean 10 deg s, somewhat suppressed
42339	Sargent cherry	21	1		yes			leans 45 deg south, forks at 10'
42343	black cottonwood	12, 10	1					forks at base
42628	Leyland cypress	15	1		yes			minor anticipated impactct, clearance pruning may be necessary
42629	Leyland cypress	13, 6	1		yes			minor anticipated impactct, clearance pruning may be necessary
42630	Leyland cypress	13, 6	1		yes			minor anticipated impactct, clearance pruning may be necessary
42631	Leyland cypress	12	1		yes			minor anticipated impactct, clearance pruning may be necessary
42632	Leyland cypress	18	1		yes			minor anticipated impactct, clearance pruning may be necessary
42633	Leyland cypress	18	1		yes			minor anticipated impactct, clearance pruning may be necessary
42634	Leyland cypress	18	1		yes			minor anticipated impactct, clearance pruning may be necessary
42635	Leyland cypress	19, 16	1		yes			minor anticipated impactct, clearance pruning may be necessary
42636	Leyland cypress	12	1		yes			broken top
42637	Leyland cypress	12	1		yes			minor anticipated impactct, clearance pruning may be necessary
42638	Leyland cypress	11	1		yes			minor anticipated impactct, clearance pruning may be necessary
42643	red alder	16		1				in decline, problematic, remove all branches and leave 18' tall trunk as habitat snag
42644	red alder	12				1	1	rotten, lean, high risk of failure
43055	black cottonwood	24, 20				1		4' E of driveway
43123	Leyland cypress	12		1				within C & G
43124	Leyland cypress	10		1				within C & G
43125	Leyland cypress	9		1				within C & G
43216	red alder	13	1					
43245	big leaf maple	15				1		within C & G
43246	big leaf maple	14	1					no concerns, save if possible
43538	black cottonwood	22		1				within C & G
43539	black cottonwood	16, 8, 6		1				co dominant stems fork at base
43540	black cottonwood	20		1				some abnormally small leaves
43541	black cottonwood	18		1				co dominant stems, one leans S 20deg
43542	black cottonwood	26		1				within C & G
43543	big leaf maple 2	14, 7		1				poor form, problematic
43545	big leaf maple 3	10, 12, 9		1				old stump sprouts, problematic
43589	Colorado blue spruce	14		1				within C & G
43606	Colorado blue spruce	11		1				within C & G
43607	Colorado blue spruce	13		1				within C & G
43609	Colorado blue spruce	10		1				within C & G
43611	Austrian pine	11		1				poor condition, heavy lean
43612	Austrian pine	14		1				within C & G
43904	red alder	22				1	1	overmature, decining, dying top
43914	red alder	17				1		forked top, thinning, moderate risk
43915	red alder	15				1		fair, mature, low to moderate risk
44149	Douglas-fir	10		1				within C & G
44150	Douglas-fir	13			yes	1		topped in past, within C & G
44151	Douglas-fir	16			yes	1		topped in past, within C & G
44153	Douglas-fir	15			yes	1		topped in past, within C & G
44155	Douglas-fir	15			yes	1		topped in past, within C & G
44157	Douglas-fir	13,8			yes	1		topped in past, within C & G
44158	Sargent cherry	14				1	1	poor condition, poor form, within C & G
44160	Lawson cypress	13		1				within C & G
44162	Lawson cypress	13		1				within C & G
44163	Lawson cypress	9,5		1				within C & G
44164	Lawson cypress	8,6		1				within C & G
44165	Lawson cypress	10			yes	1		within C & G line, save, monitor, and clearance pruning
44348	Chantcleer pear	14			yes	1		within C & G line, save, monitor, and clearance pruning
44349	Leyland cypress	11			yes	1		within C & G line, save, monitor, and clearance pruning
44350	Leyland cypress	15			yes	1		within C & G line, save, monitor, and clearance pruning
44353	eastern hemlock	15				1		within C & G line, save, and monitor
44354	eastern hemlock	12				1		within C & G line, save, and monitor
44357	eastern hemlock	11			yes	1		near C&G line, save and monitor, minor clearance pruning
44358	eastern hemlock	14			yes	1		near C&G line, save and monitor, minor clearance pruning
44397	black cottonwood	17				1	1	heavy lean to trail, problematic
44399	black cottonwood	13,6				1	1	heavy lean to trail
200079	red alder	14				1	1	heavy lean to trail
200080	red alder	17				1	1	mature, declining top
200406	Deodar cedar	28	1					
210346	Leyland cypress	12			yes	1		near C&G line, save and monitor
210347	Leyland cypress	8			yes	1		near C&G line, save and monitor
210348	Leyland cypress	8			yes	1		near C&G line, save and monitor
210349	Leyland cypress	10			yes	1		near C&G line, save and monitor
210350	Leyland cypress	10			yes	1		near C&G line, save and monitor
210351	Leyland cypress	8			yes	1		near C&G line, save and monitor
210352	Leyland cypress	8			yes	1		near C&G line, save and monitor
210353	Leyland cypress	8			yes	1		near C&G line, save and monitor
210354	Leyland cypress	8			yes	1		near C&G line, save and monitor
210355	Leyland cypress	8			yes	1		near C&G line, save and monitor
210356	Leyland cypress	8			yes	1		near C&G line, save and monitor
210357	Leyland cypress	8			yes	1		near C&G line, save and monitor
210358	Leyland cypress	8			yes	1		near C&G line, save and monitor
210359	Leyland cypress	8			yes	1		near C&G line, save and monitor
210360	Leyland cypress	8			yes	1		near C&G line, save and monitor
210361	Leyland cypress	10			yes	1		near C&G line, save and monitor
210362	Leyland cypress	10			yes	1		near C&G line, save and monitor
210363	Leyland cypress	10			yes	1		near C&G line, save and monitor

PATH: U:\PSO\Projects\Clients\1521-KingCo\554-1521-075-ELST\99Secs\CADD\Phase 20\Task 03\DWG\ LAYOUT: TP11 PLOTTED BY: purgobut DATE: Thursday, April 23, 2015 11:37:38 AM

TREE DESCRIPTION AND RECOMMENDATIONS

SEC'S 8, 17 TWP. 24 N., RGE. 06 E, W.M.

Tree #	Species	DBH	Save	Remove	Prune	Monitor	Potential Hazard	Comments
210364	Leyland cypress	10			yes	1		near C&G line, save and monitor
210365	Leyland cypress	10			yes	1		near C&G line, save and monitor
210366	Leyland cypress	8			yes	1		near C&G line, save and monitor
210367	Leyland cypress	8			yes	1		near C&G line, save and monitor
210368	Leyland cypress	8			yes	1		near C&G line, save and monitor
210369	Leyland cypress	8			yes	1		near C&G line, save and monitor
210370	Leyland cypress	8			yes	1		near C&G line, save and monitor
210371	Leyland cypress	8			yes	1		near C&G line, save and monitor
210372	Leyland cypress	8			yes	1		near C&G line, save and monitor
210373	Leyland cypress	8			yes	1		near C&G line, save and monitor
210374	Leyland cypress	8			yes	1		near C&G line, save and monitor
210375	Leyland cypress	8			yes	1		near C&G line, save and monitor
210376	Leyland cypress	8			yes	1		near C&G line, save and monitor
210377	Leyland cypress	8			yes	1		near C&G line, save and monitor
210378	Leyland cypress	8			yes	1		near C&G line, save and monitor
210379	Leyland cypress	8			yes	1		near C&G line, save and monitor
210380	Leyland cypress	10			yes	1		near C&G line, save and monitor
210381	Leyland cypress	10			yes	1		near C&G line, save and monitor
210382	Leyland cypress	10			yes	1		near C&G line, save and monitor
210383	Leyland cypress	10			yes	1		near C&G line, save and monitor
210384	Leyland cypress	10			yes	1		near C&G line, save and monitor
210385	Leyland cypress	8			yes	1		near C&G line, save and monitor
210386	Leyland cypress	8			yes	1		near C&G line, save and monitor
210387	Leyland cypress	10			yes	1		near C&G line, save and monitor
210388	Leyland cypress	10			yes	1		near C&G line, save and monitor
220461	Leyland cypress	9			yes	1		within C & G line, save, monitor, and clearance pruning
220462	Leyland cypress	18	1					beyond fence, no anticipated impacts
220463	Leyland cypress	14	1					beyond fence, no anticipated impacts
220464	Leyland cypress	16	1					beyond fence, no anticipated impacts
220465	Leyland cypress	14	1					beyond fence, no anticipated impacts
220466	Leyland cypress	8	1					beyond fence, no anticipated impacts
220467	Leyland cypress	12	1					beyond fence, no anticipated impacts
220469	Douglas-fir	10			yes	1		near C&G line, save and monitor, clearance prune
260500	black cottonwood	14				1		natural lean to trail, minor crooks
260502	Leyland cypress	8	1		yes			no anticipated impact, clearance pruning may be necessary
260503	Leyland cypress	8	1		yes			no anticipated impact, clearance pruning may be necessary
260504	Leyland cypress	8	1		yes			no anticipated impact, clearance pruning may be necessary
260505	Leyland cypress	8	1		yes			no anticipated impact, clearance pruning may be necessary
260506	Leyland cypress	8	1		yes			no anticipated impact, clearance pruning may be necessary
260507	Leyland cypress	8	1		yes			no anticipated impact, clearance pruning may be necessary
260508	Leyland cypress	8	1		yes			no anticipated impact, clearance pruning may be necessary
260509	Leyland cypress	8	1		yes			no anticipated impact, clearance pruning may be necessary
260510	Leyland cypress	8	1		yes			no anticipated impact, clearance pruning may be necessary
260511	Leyland cypress	8	1		yes			no anticipated impact, clearance pruning may be necessary
260512	Leyland cypress	8	1		yes			no anticipated impact, clearance pruning may be necessary
260531	Lawson cypress	8,6			yes	1		within C & G line, save, monitor, and clearance pruning
260533	Lawson cypress	10			yes	1		within C & G line, save, monitor, and clearance pruning
260536	Austrian pine	10		1				within C & G
260537	Japanese white pine	8		1				within C & G
260539	Japanese white pine	10		1				within C & G
260542	Douglas-fir	9		1				within C & G
260544	Douglas-fir	8		1				fork at 10'
260546	Douglas-fir	8		1				within C & G
260548	Douglas-fir	8		1				within C & G
TOTALS	250		121	29		100		

CITY OF SAMMAMISH APPROVAL	
City Engineer _____	Date _____
Community Development _____	Date _____

DPER ACTIVITY NUMBER
GRDE14-0052 / SHORE14-0022
FEDERAL AID #

95 % REVIEW SUBMITTAL
NOT FOR CONSTRUCTION

REVISIONS	DATE	BY	DESIGNED J. JUN
			DRAWN B. PURGANAN
			CHECKED Y. HO
			APPROVED O. KIKUTA

ONE INCH AT FULL SCALE.
IF NOT, SCALE ACCORDINGLY

FILE NAME
BL1521075P20T03TP-10

JOB No.
554-1521-075 P20T03

DATE
APRIL 2015

PRELIMINARY

Parametrix
ENGINEERING . PLANNING . ENVIRONMENTAL SCIENCES

719 2ND AVENUE, SUITE 200 | SEATTLE, WA 98104
P 206.394.3700
WWW.PARAMETRIX.COM

PROJECT NAME

EAST LAKE SAMMAMISH
MASTER PLAN TRAIL
SOUTH SAMMAMISH SEGMENT A
SAMMAMISH, WA

TREE PRESERVATION
NOTES AND DETAILS

SHEET NO.
89 OF 78

TP11