



DAC Meeting #6



Westlake Design Advisory Committee
Sam Woods, Kenneth Loen, Kristen Lohse
July 28, 2014

SDOT's mission & vision

Mission: delivering a first-rate transportation system for Seattle.



Vision: a vibrant Seattle with connected people, places, and products.

SDOT's values



Presentation overview

- What we've heard
- Evolution of concept
- Discussion

Goals for concept process

- What is a concept?
- Develop a concept for DAC feedback
- Share a concept at the open house for public feedback

What we've been hearing

- Agreement with project goals and objectives
 - Safety for all users
 - Connectivity
 - Economic vitality
 - Accessibility

What we've been hearing

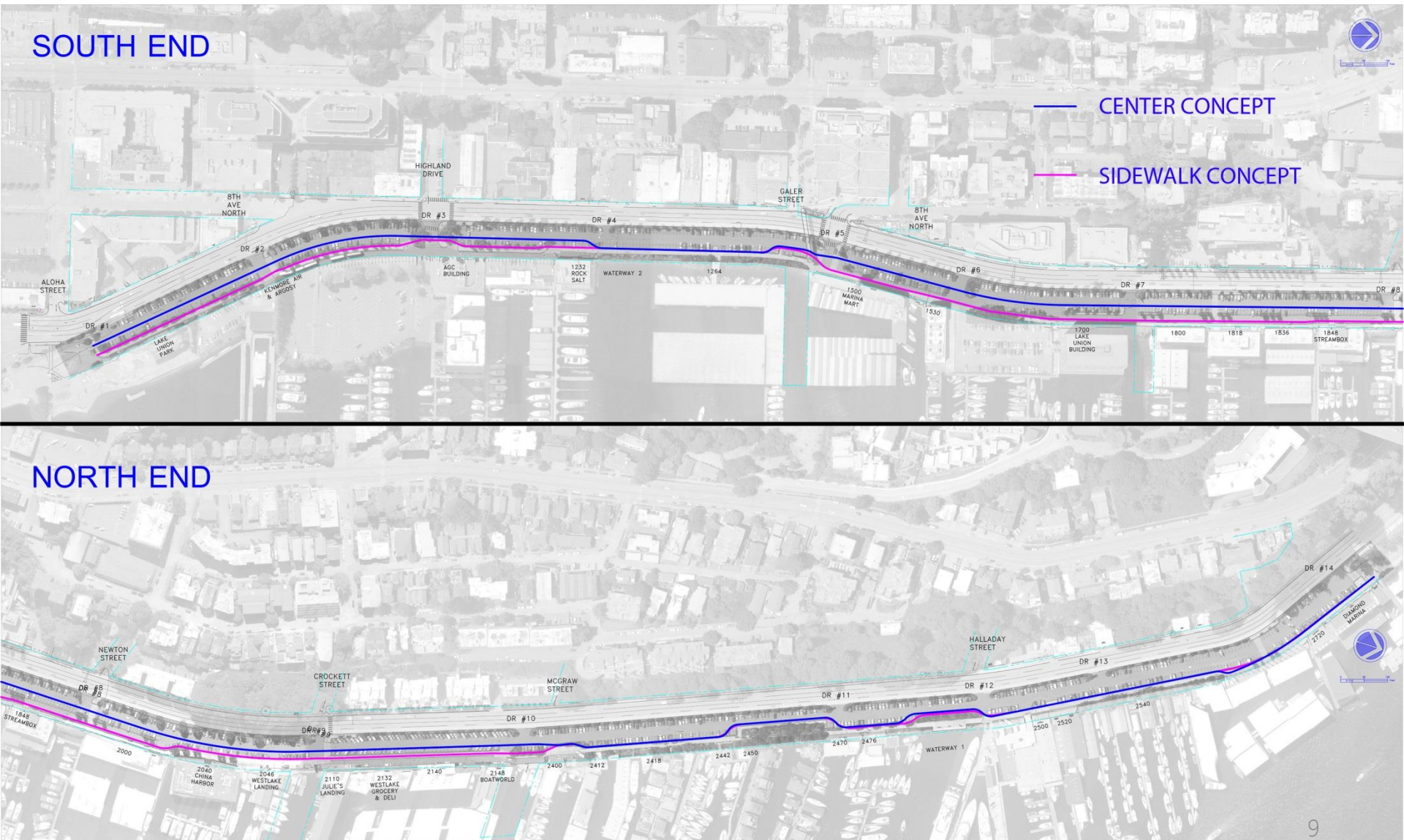
- Key concern overview
 - Parking
 - Circulation
 - Bicycle behavior
 - Speeds for bikes and vehicles
 - Visibility concerns
 - Pedestrian activity
 - Unique loading needs

What we've been doing

- **April** – presented Concepts A and B
- **May** – revised concept development approach
- **May-July** – gathered detailed segment input
- **June-July** – developed Center Concept
- **July** – began development of Sidewalk Concept



Two concepts tonight

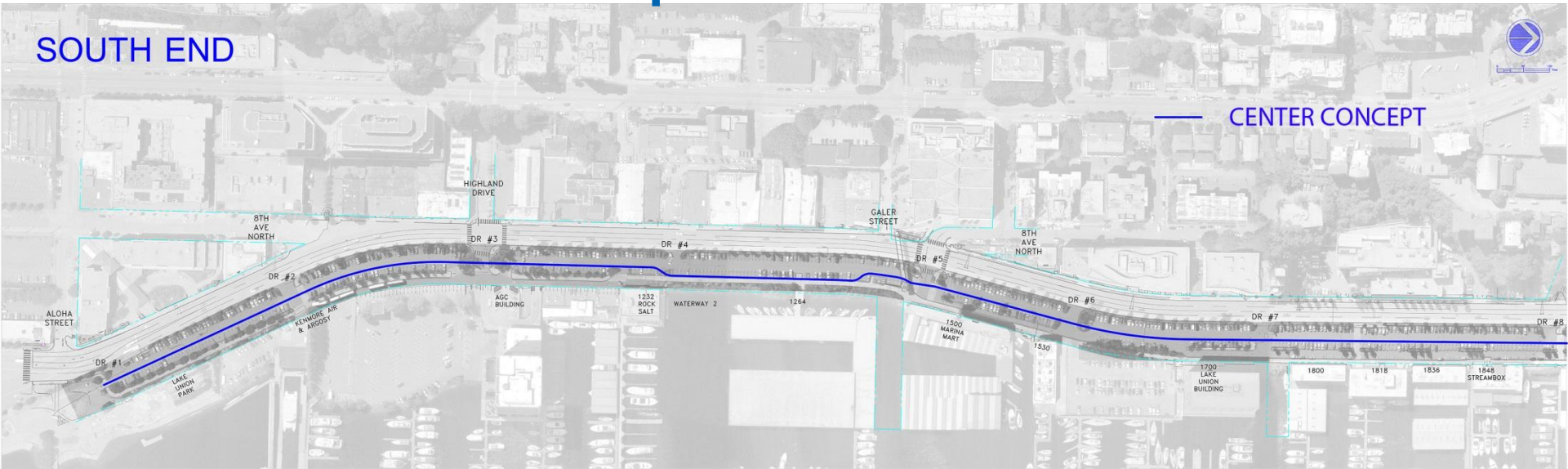


Evolution of the Center Concept



Overview map

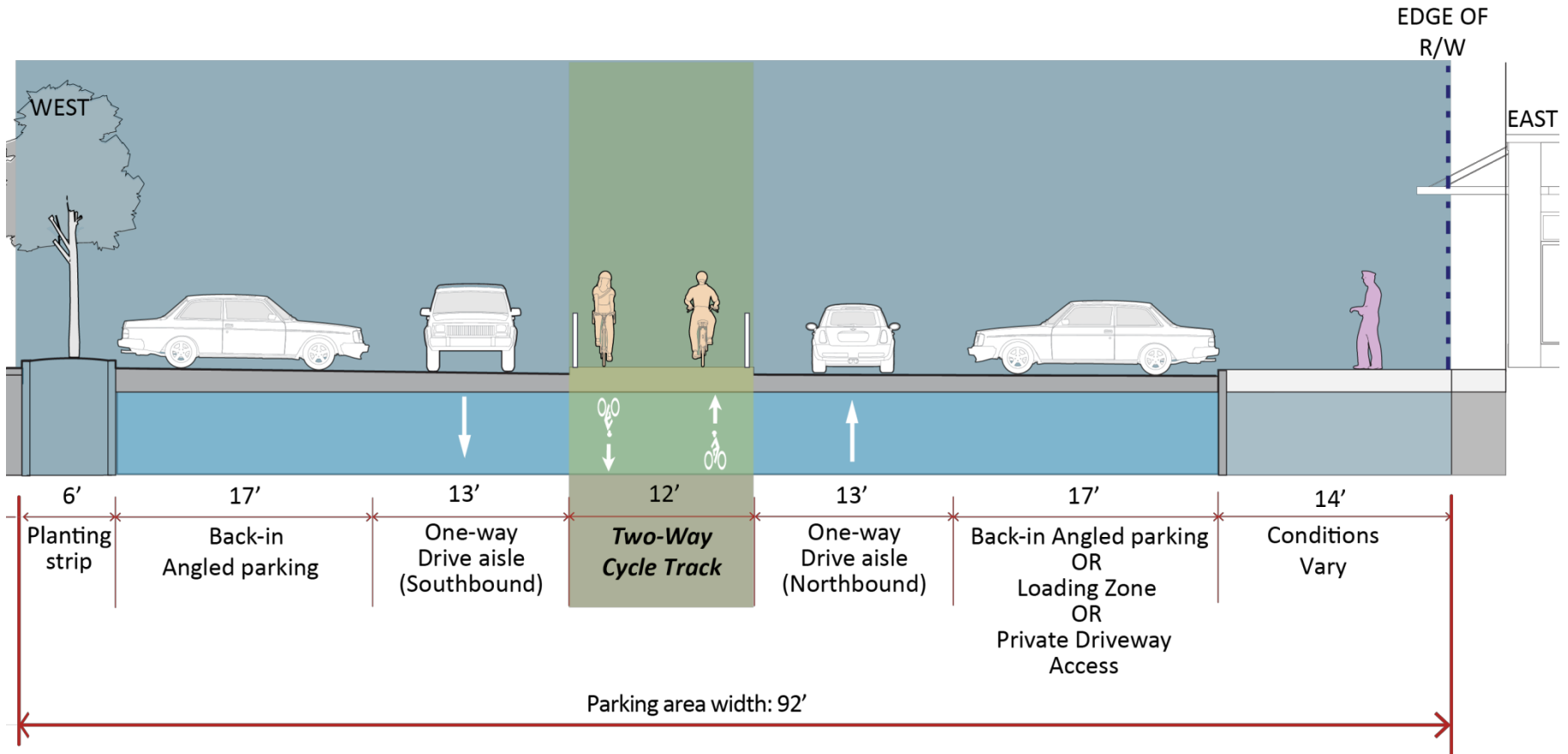
SOUTH END



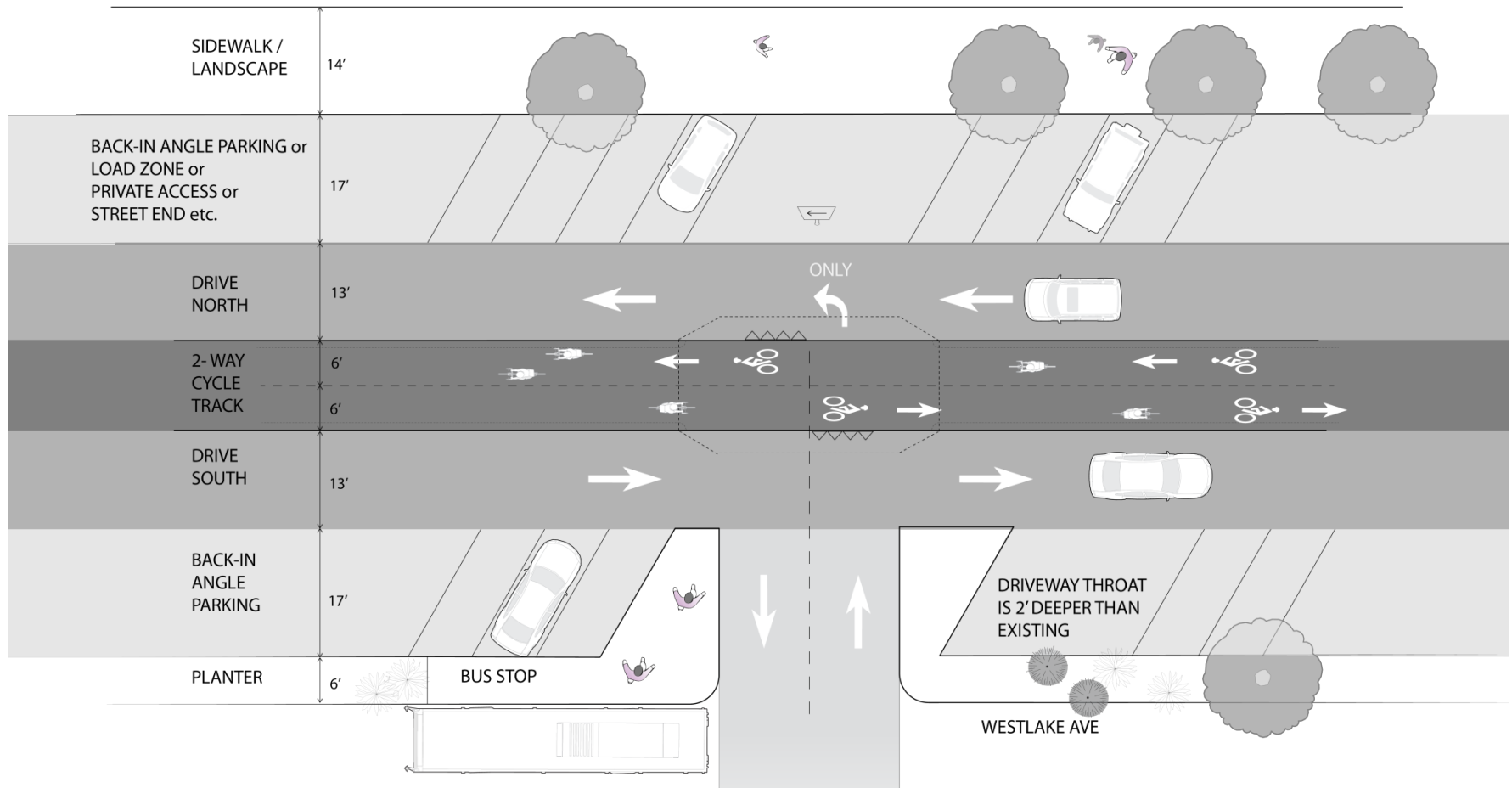
NORTH END



What is the Center Concept?



Center Concept – How it works



Similar concept



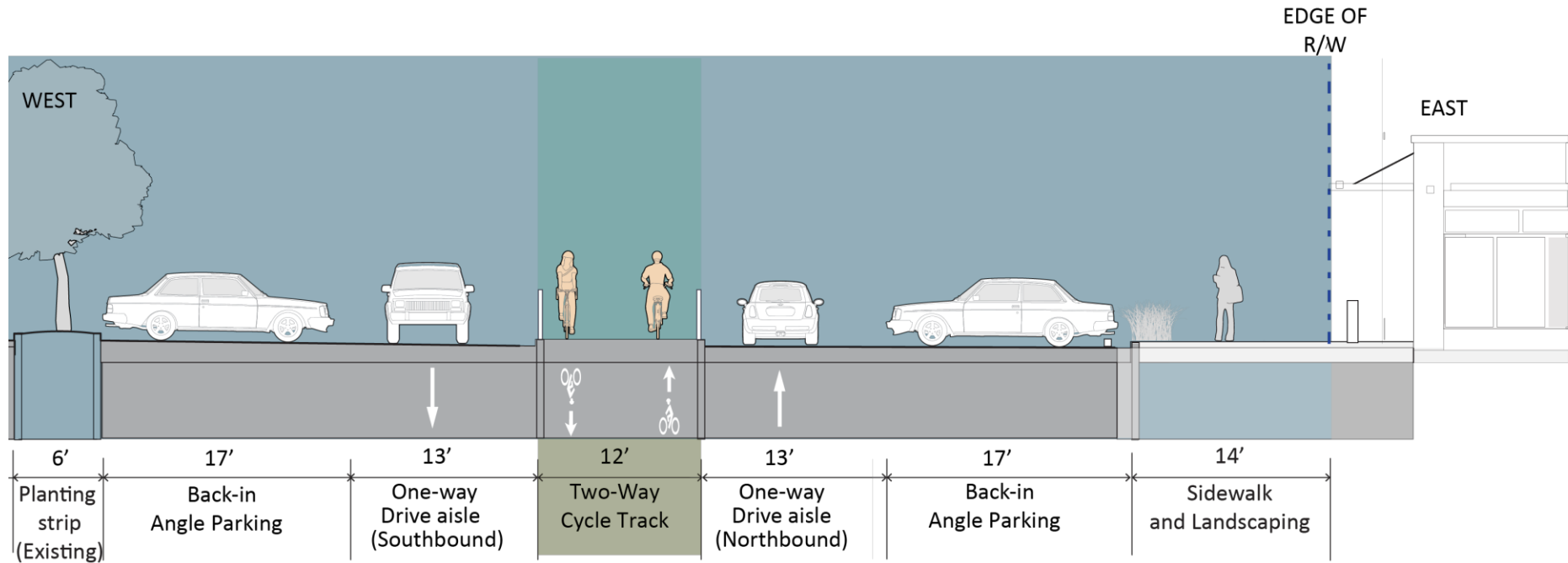
Pennsylvania Avenue in Washington DC

Street view - Middle

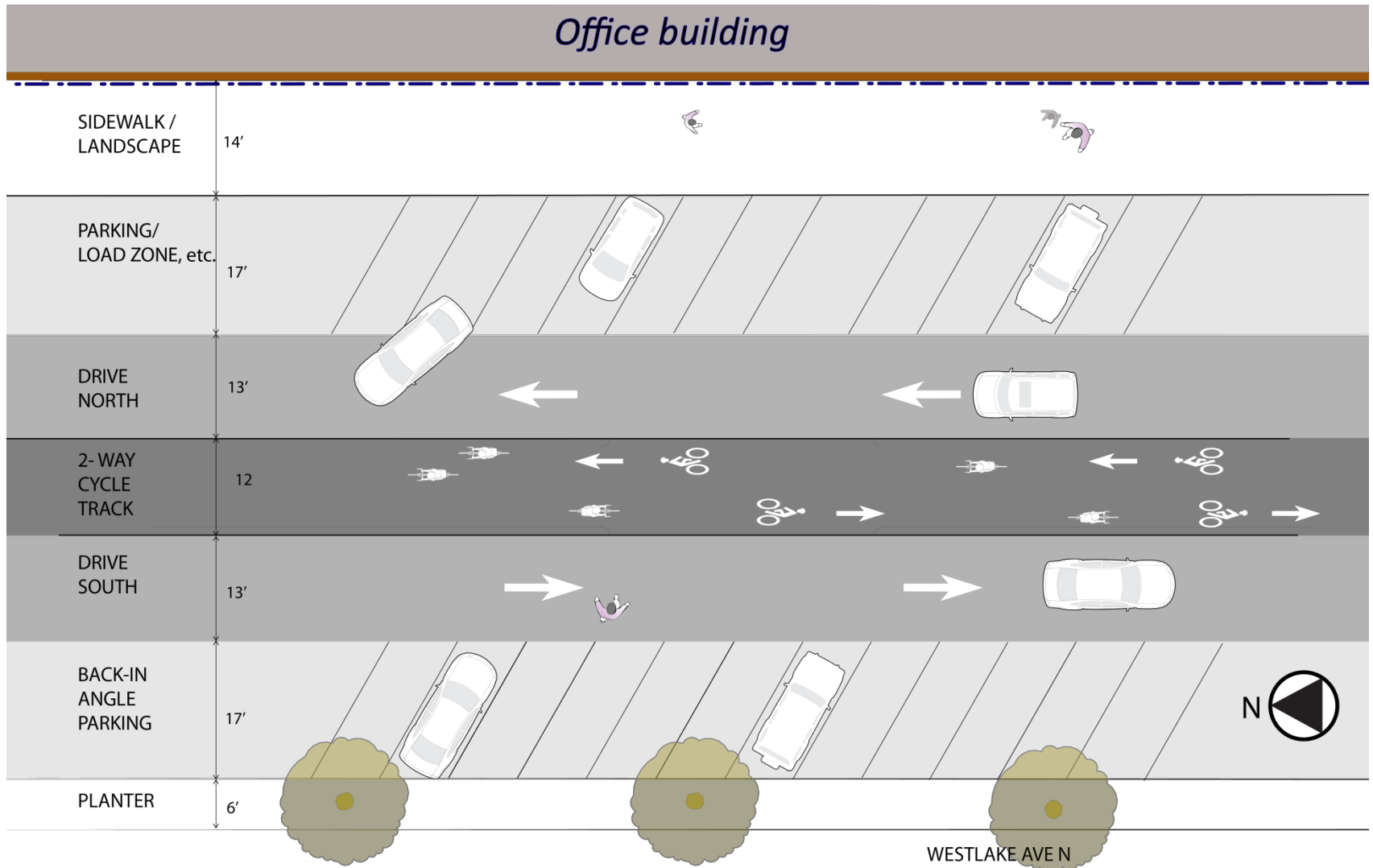


1800 block, north of Blaine Street End

Center Concept – Middle



Center Concept – Middle

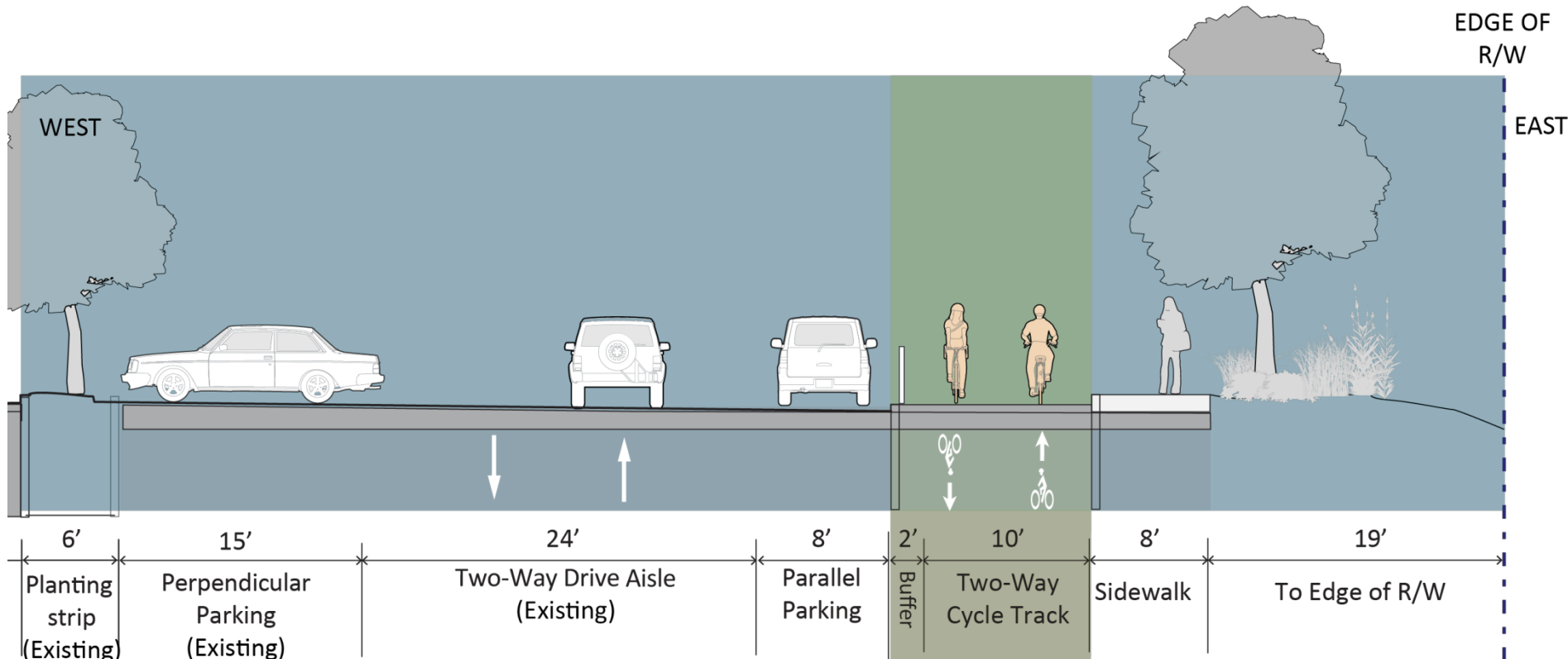


Street view - North

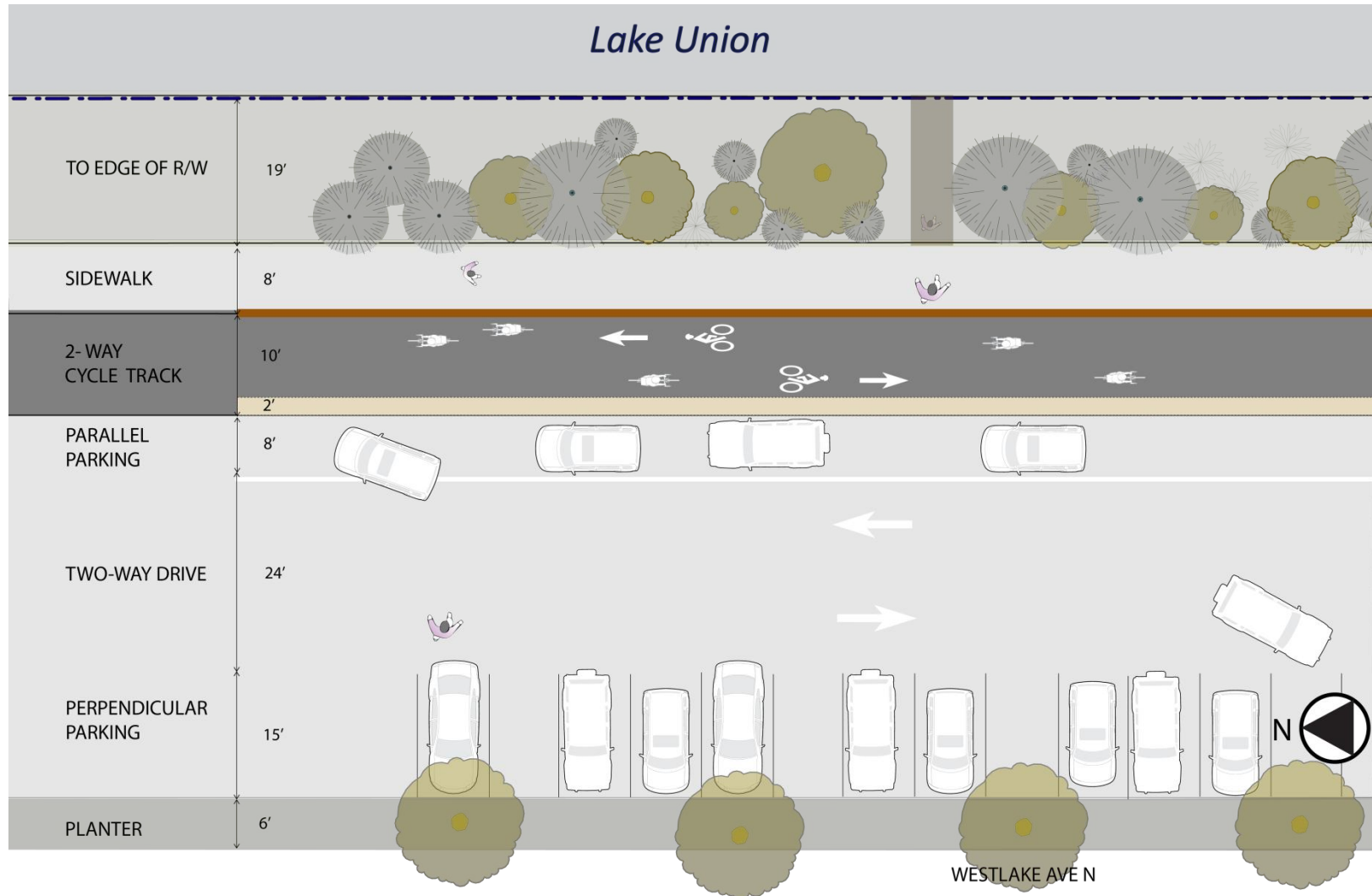


2600 block, north of Driveway #13

Center Concept – North



Center Concept – North

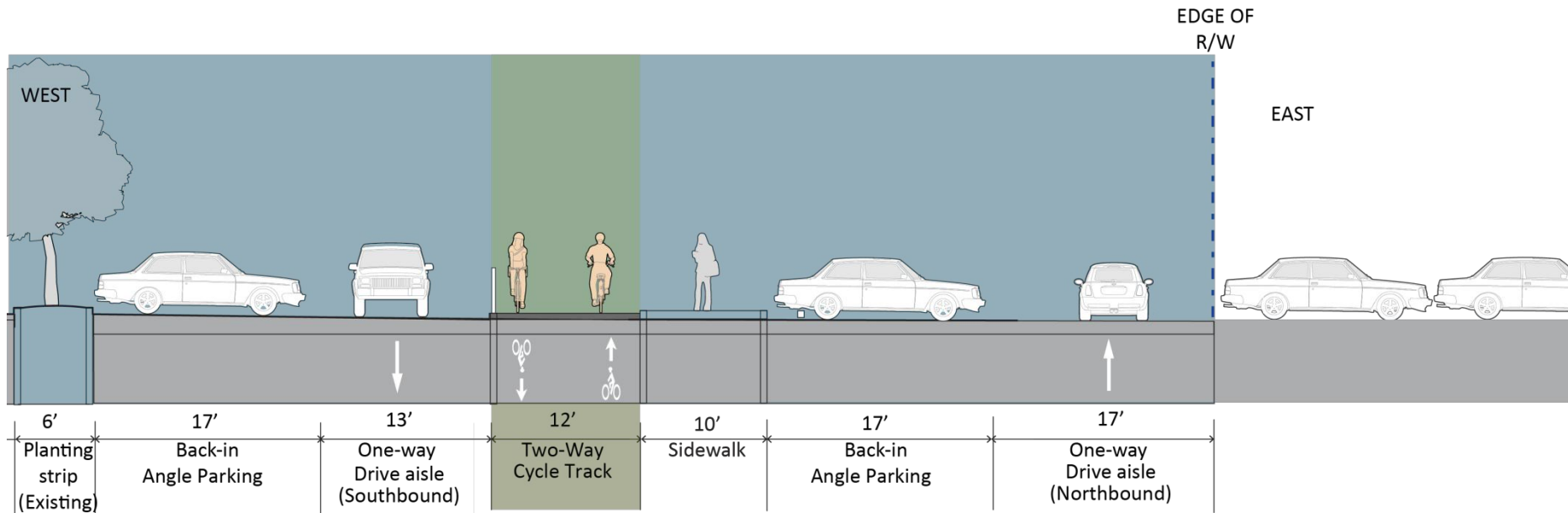


Street view - South

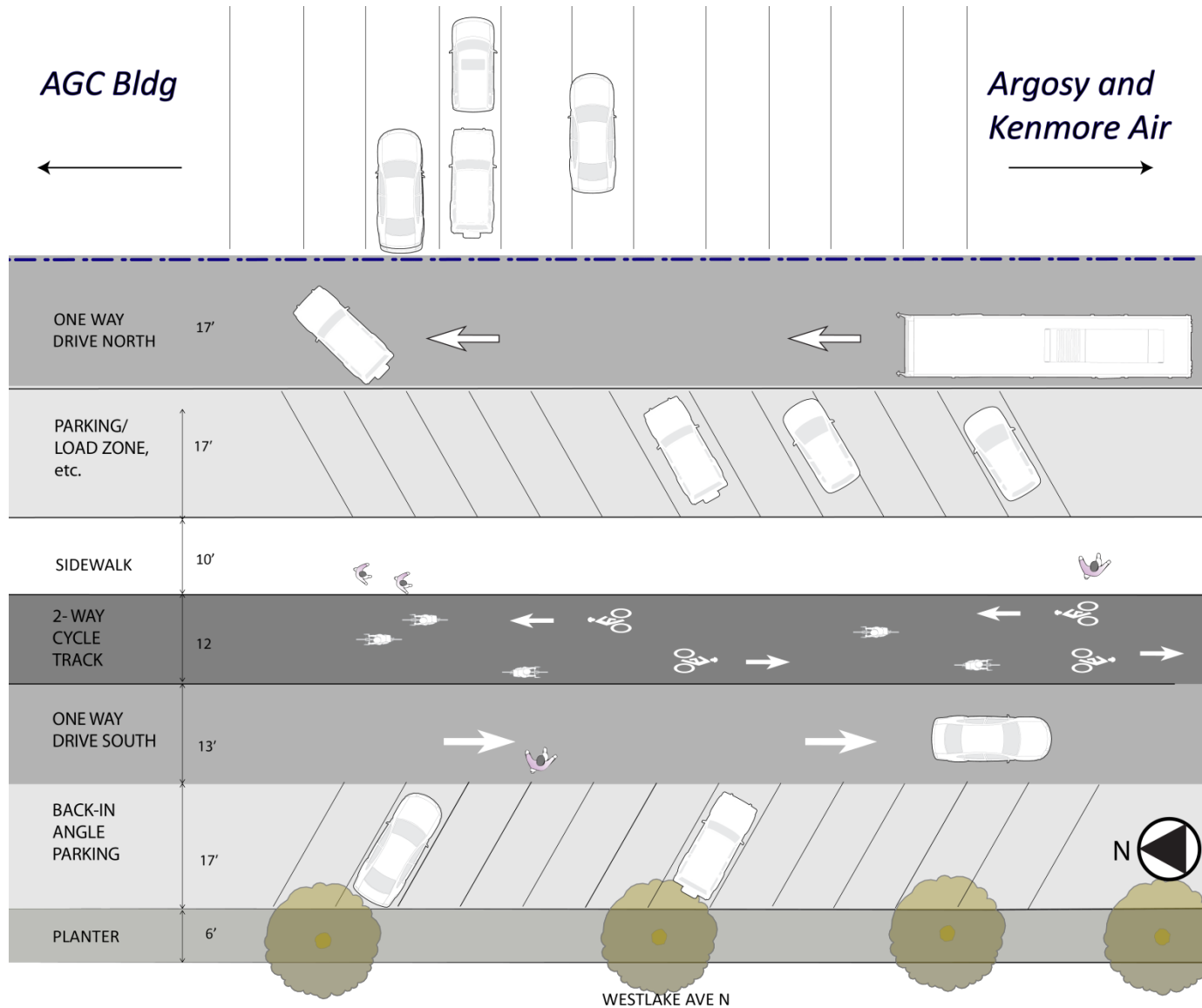


South of AGC Building

Center Concept – South



Center Concept – South



Center Concept – What works

- High predictability and intuitive
- Increased safety at driveways and crossings
- Separation with mixing zones only at driveways
- Puts loading zones, business access, ADA parking, etc. immediately adjacent to the sidewalk
- Two-way vehicle circulation
- Preserves approx. 75% parking spaces

Center Concept – Challenges

- Places bikes between drive lanes
- Potential misuse by motorists (U-turns)
- Changed functionality of the parking lot
- Major landscape impacts
- Major reconstruction of the parking lot
 - Extended construction duration
 - Reduced accessibility during construction

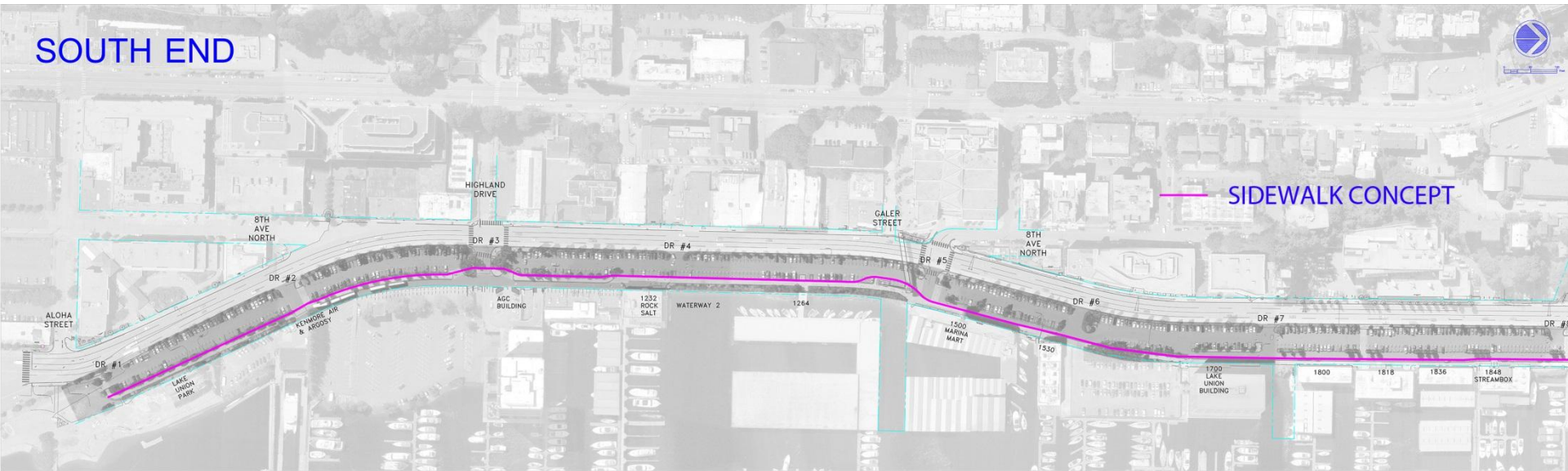
Center Concept discussion

Evolution of Sidewalk Concept



Overview map

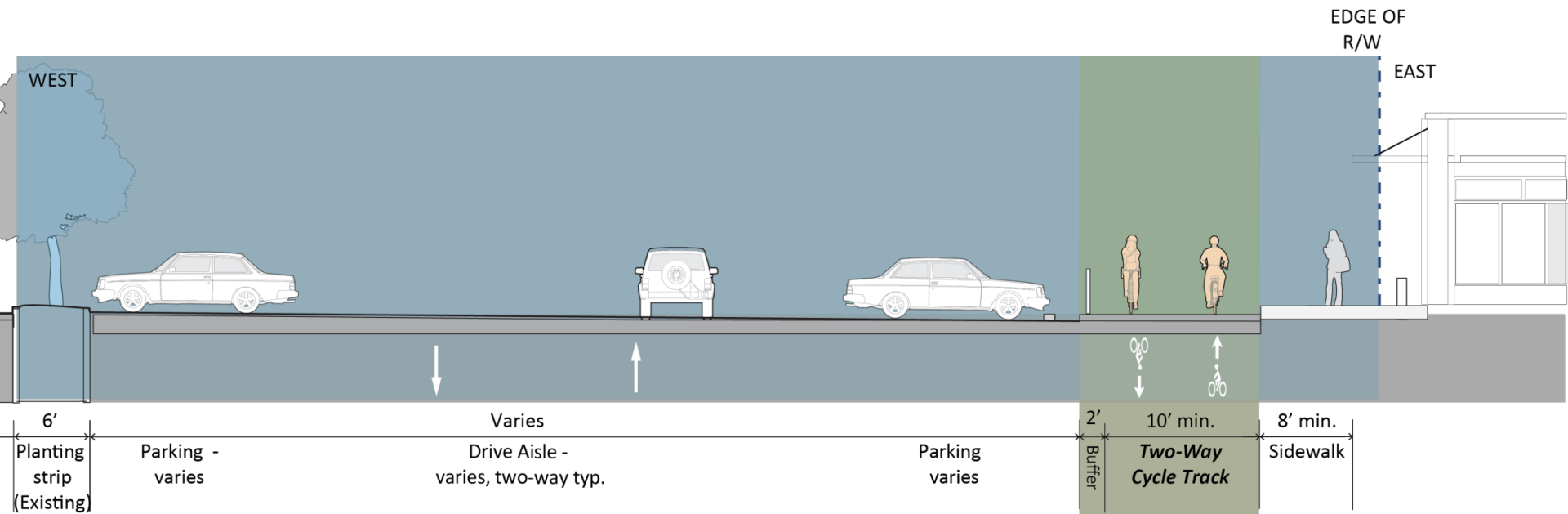
SOUTH END



NORTH END



What is the Sidewalk Concept?



Similar concept



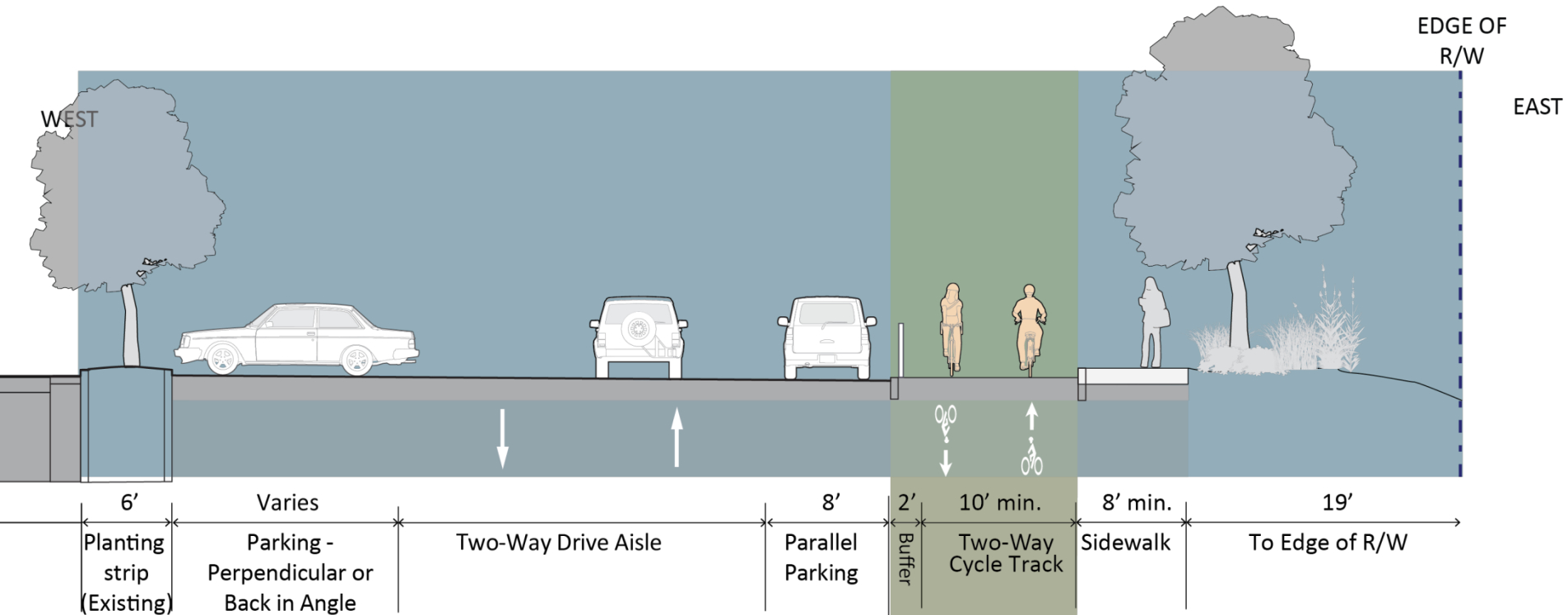
Burke Gilman Trail at University of Washington

Street view - North

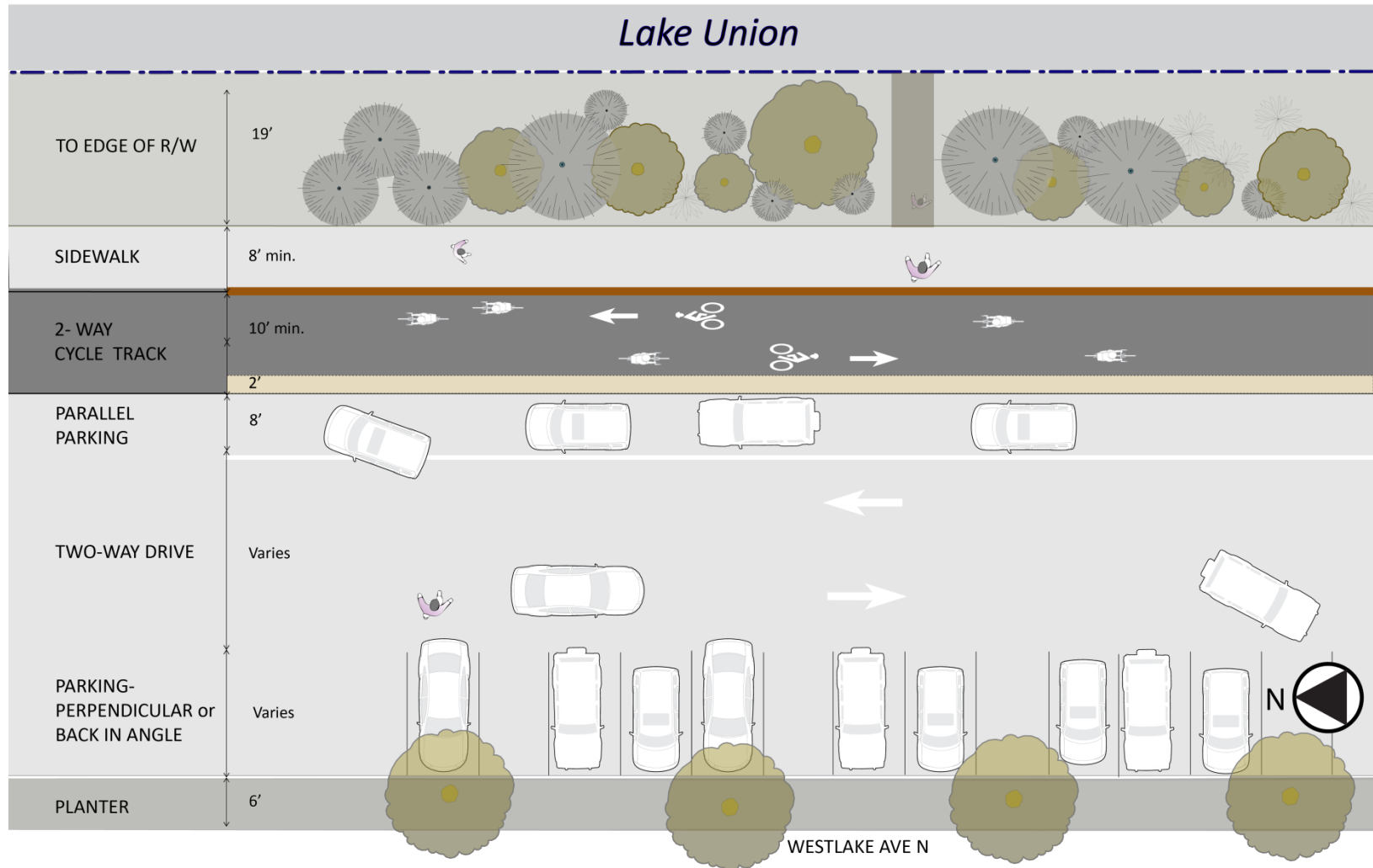


2600 block, north of Driveway #13

Sidewalk Concept – North



Sidewalk Concept – North

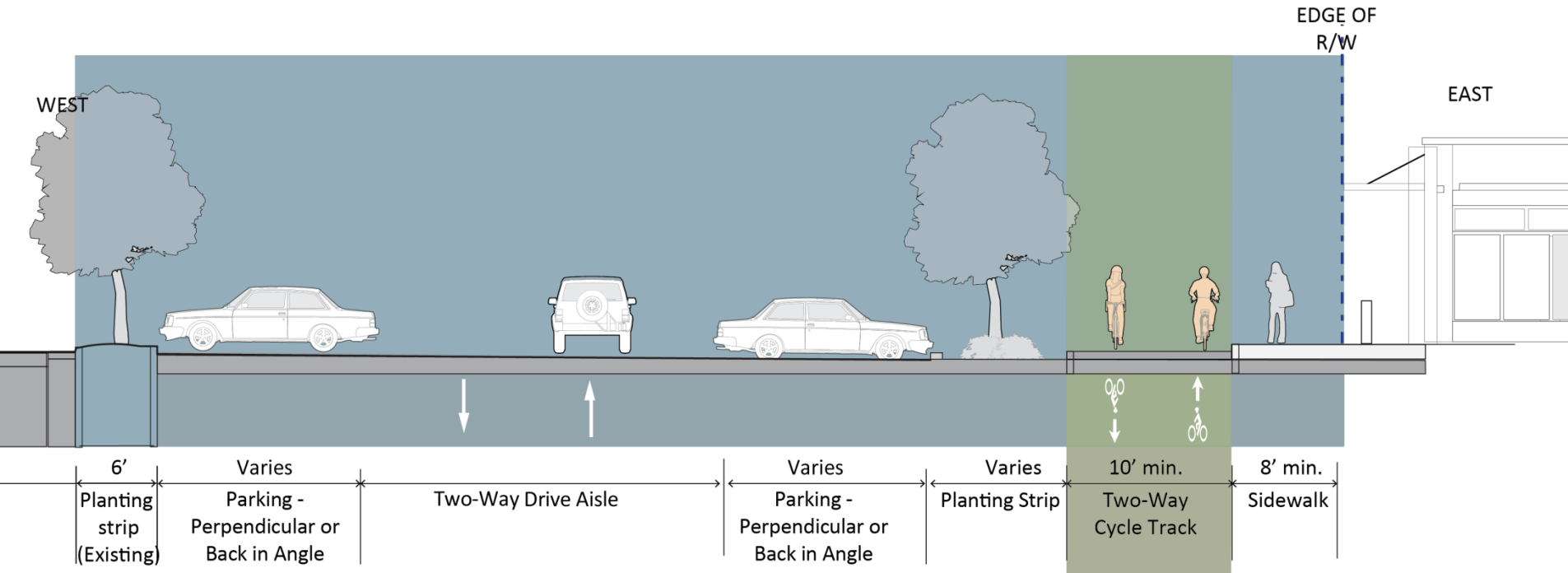


Street view - Middle

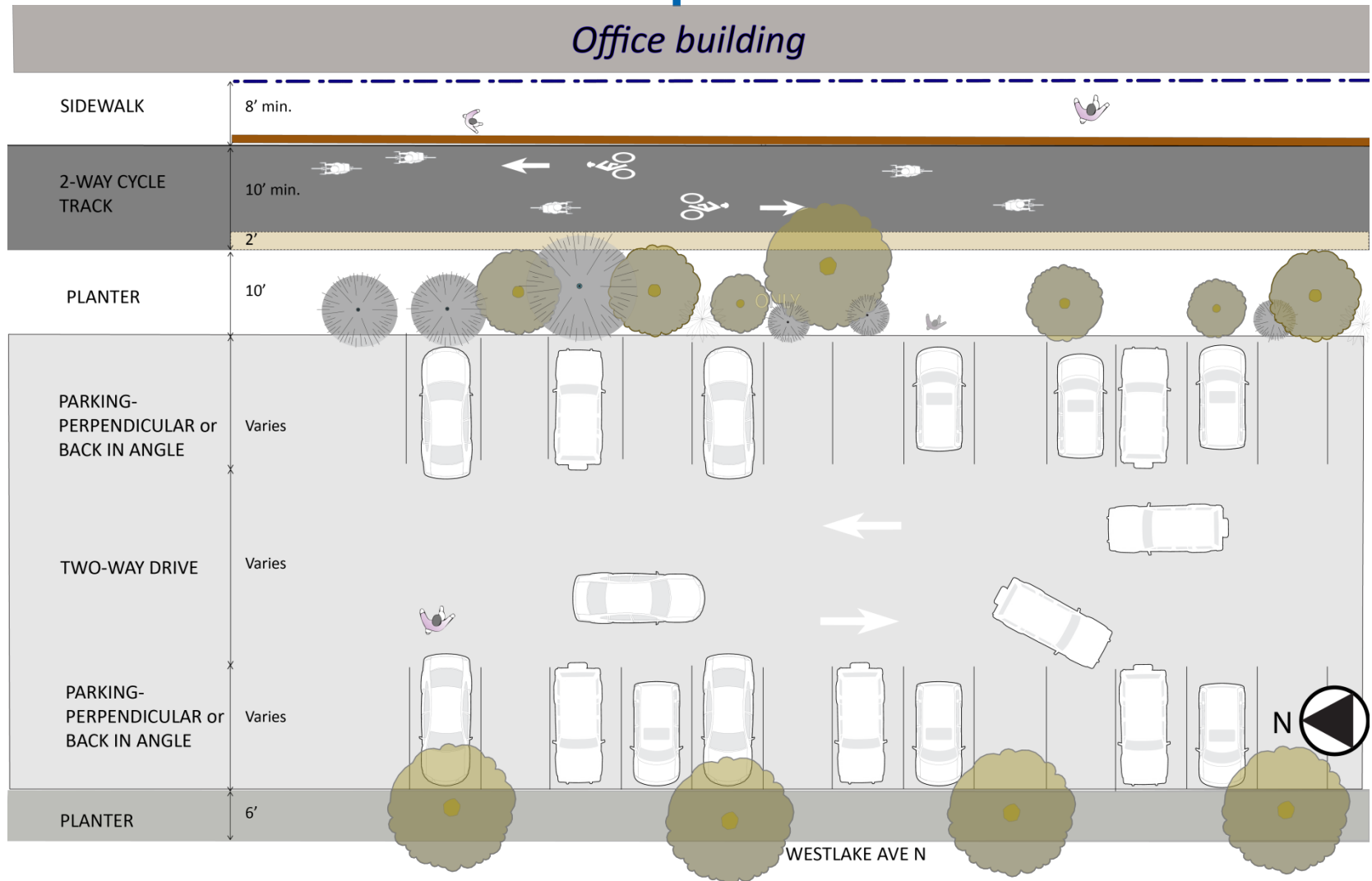


1800 block, north of Blaine Street End

Sidewalk Concept - Middle



Sidewalk Concept - Middle

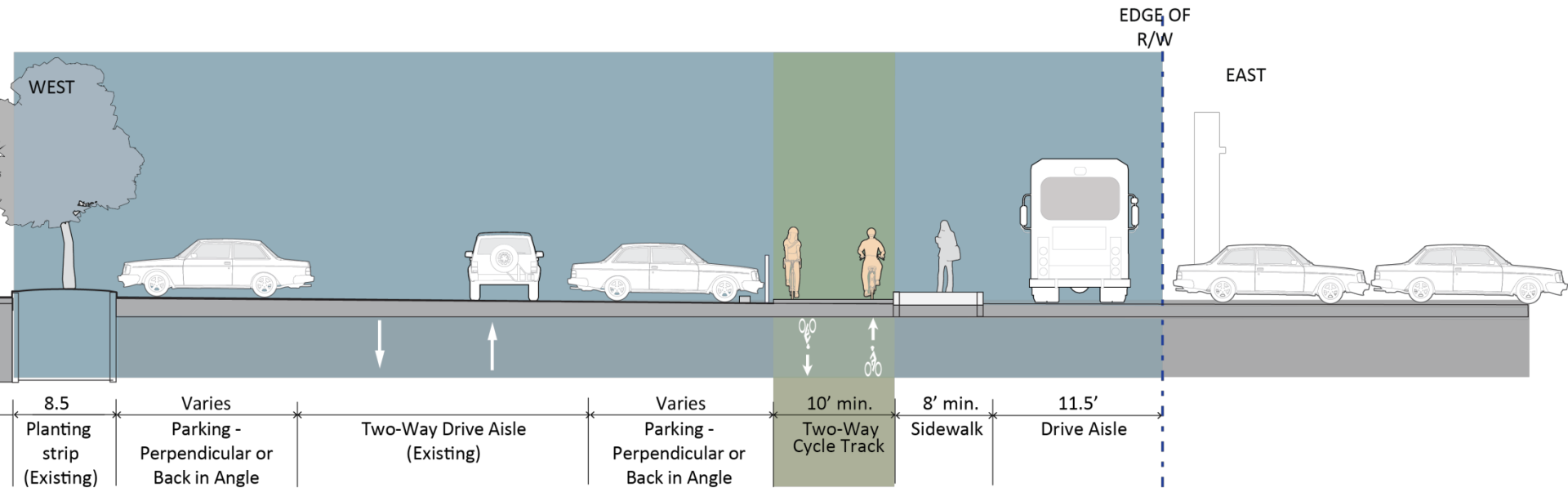


Street view - South

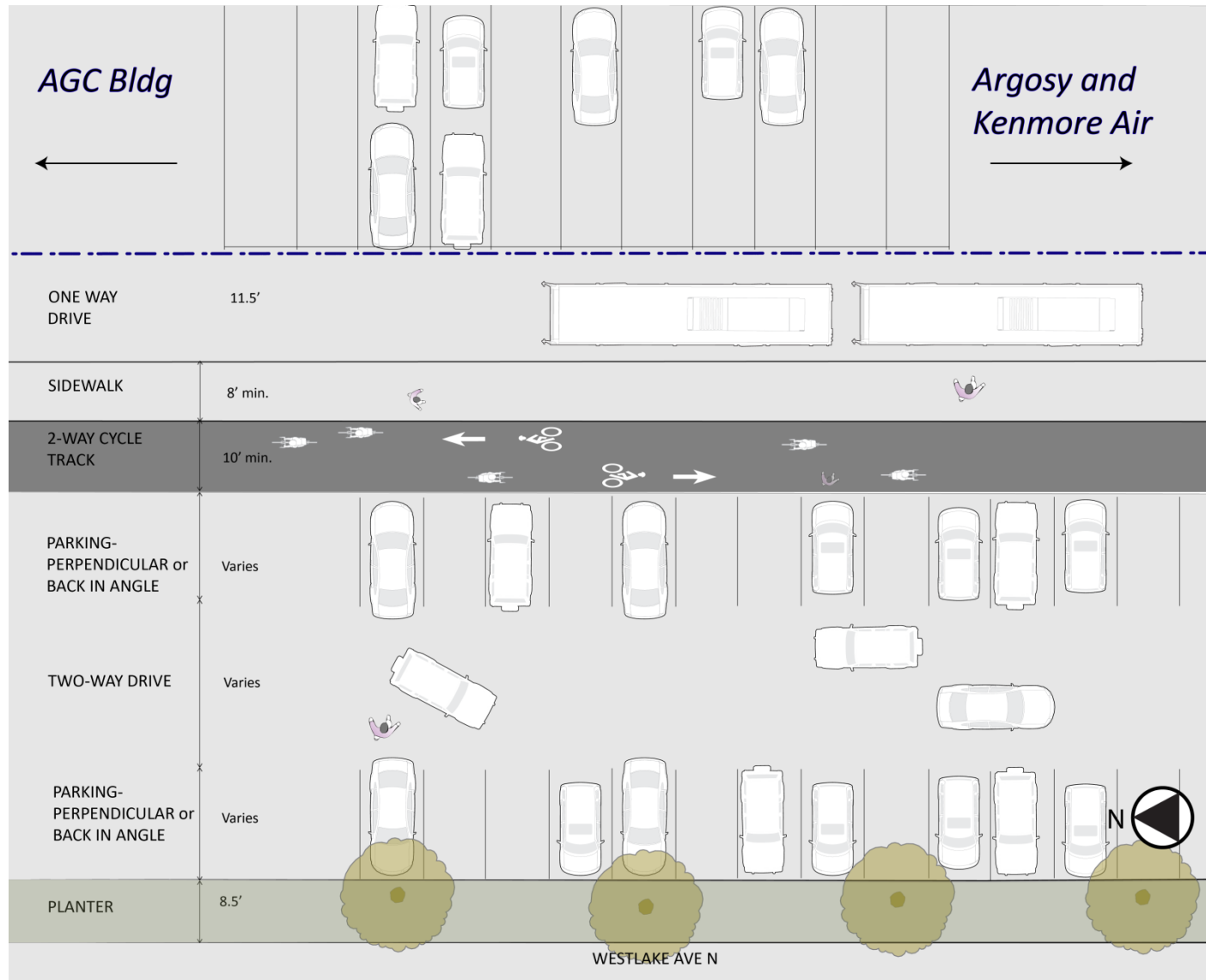


South of AGC Bldg

Sidewalk Concept – South



Sidewalk Concept – South



How is this different than Concept B?

Concept B:

- Strove to maintain the curbline
- Maintained the existing sidewalk width
- Greater parking impacts
- Used the drive aisle in the south end

Sidewalk Concept:

- Developed with more corridor-specific information
- Maintains more two-way functionality
- Straighter than Concept B

Sidewalk Concept – What works

- Better experience for all users
 - Few vehicle/bike conflicts
 - More comfortable and relaxed experience
 - Predictable and intuitive/familiar
 - More consistent through the corridor
- Fewer construction impacts
- Preserves approx. 80% parking spaces

Sidewalk Concept – Challenges

- Customers and residents must cross the bike facility
- Major landscaping impacts
- Loading must cross bike facility
- Potential use of parking area by faster cyclists

Sidewalk Concept discussion

Big picture

- Tradeoffs with any solution
- Unique corridor
- Immediate and growing demand
- Alignment is only part of the solution
- Parking management strategies

DAC discussion

What's next in concept development?

- Continue to refine specific information
- Community roundtables
- More detailed concept at next DAC meeting

Upcoming activities

- Community roundtables
 - AGC: 8/5
 - North end residents: 8/11
 - North end businesses: 8/14

DAC workplan

- 8/25: DAC meeting #7 – updated concept, parking management, moorage survey
- 9/30: DAC meeting #8 – preview what will be shared at open house
- 10/22: Open house

Questions?

WCT@seattle.gov | (206) 909-8578

<http://www.seattle.gov/transportation/wct.htm>

<http://www.seattle.gov/transportation>

